

Datasheet for ABIN5581688
anti-KCNQ2 antibody (AA 189-238)[Go to Product page](#)

2 Images

Overview

Quantity:	100 µL
Target:	KCNQ2
Binding Specificity:	AA 189-238
Reactivity:	Human
Host:	Rabbit
Clonality:	Polyclonal
Conjugate:	This KCNQ2 antibody is un-conjugated
Application:	Western Blotting (WB), Immunohistochemistry (Paraffin-embedded Sections) (IHC (p))

Product Details

Purpose:	Rabbit polyclonal antibody raised against partial synthetic protein of human KCNQ2.
Immunogen:	A synthetic peptide corresponding to amino acids 189-238 of human KCNQ2.
Sequence:	GNVFATSALR SLRFLQILRM IRMDRRGGTW KLLGSVVYAH SKELVTAWYI
Isotype:	IgG
Cross-Reactivity:	Human

Target Details

Target:	KCNQ2
Alternative Name:	KCNQ2 (KCNQ2 Products)
Background:	Full Gene Name: potassium voltage-gated channel, KQT-like subfamily, member 2

Target Details

Synonyms: BFNC,EBN,EBN1,ENB1,HNSPC,KCNA11,KV7.2,KVEBN1

Gene ID: 3785

Application Details

Application Notes: Immunohistochemistry (1:250)
Western Blot (1:1000)
The optimal working dilution should be determined by the end user.

Restrictions: For Research Use only

Handling

Format: Liquid

Buffer: In 1X PBS , pH 7.4 (2 % sucrose, 0.09 % sodium azide).

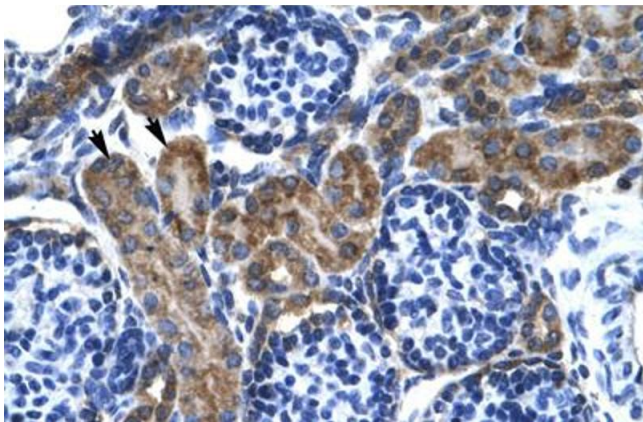
Preservative: Sodium azide

Precaution of Use: This product contains Sodium azide: a POISONOUS AND HAZARDOUS SUBSTANCE which should be handled by trained staff only.

Storage: 4 °C,-20 °C

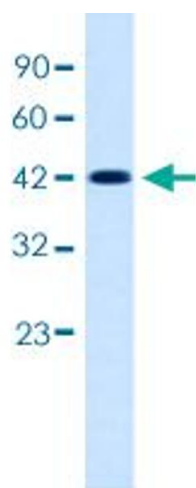
Storage Comment: Store at 4°C for up to one week. For long term storage store at -20°C.
Aliquot to avoid repeated freezing and thawing.

Images



Immunohistochemistry

Image 1. Immunohistochemical staining (Formalin-fixed paraffin-embedded sections) of human kidney with KCNQ2 polyclonal antibody .



Western Blotting

Image 2. Western blot analysis of HepG2 cell lysate with KCNQ2 polyclonal antibody .