



Datasheet for ABIN5581702
anti-KCTD15 antibody (AA 1-234)



[Go to Product page](#)

2 Images

Overview

Quantity:	100 µL
Target:	KCTD15
Binding Specificity:	AA 1-234
Reactivity:	Human
Host:	Mouse
Clonality:	Monoclonal
Conjugate:	This KCTD15 antibody is un-conjugated
Application:	Western Blotting (WB), ELISA, Immunofluorescence (IF), Immunocytochemistry (ICC)

Product Details

Purpose:	Mouse monoclonal antibody raised against partial recombinant KCTD15.
Immunogen:	Recombinant protein corresponding to amino acids 1-234 of human KCTD15.
Clone:	AT4C3
Isotype:	IgG3
Cross-Reactivity:	Human

Target Details

Target:	KCTD15
Alternative Name:	KCTD15 (KCTD15 Products)
Background:	Full Gene Name: potassium channel tetramerisation domain containing 15

Target Details

Synonyms: MGC25497,MGC2628

Gene ID: 79047

Application Details

Application Notes: Western Blot (1:250-1:500)
Immunofluorescence (1:250-1:500)
The optimal working dilution should be determined by the end user.

Restrictions: For Research Use only

Handling

Format: Liquid

Buffer: In PBS, pH 7.4 (10 % glycerol, 0.02 % sodium azide).

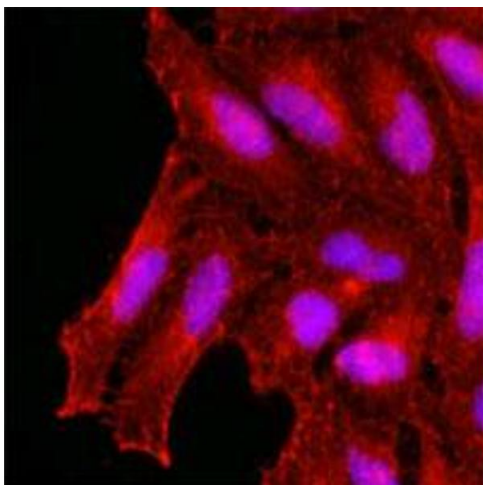
Preservative: Sodium azide

Precaution of Use: This product contains Sodium azide: a POISONOUS AND HAZARDOUS SUBSTANCE which should be handled by trained staff only.

Storage: -20 °C,-80 °C

Storage Comment: Store at 2°C to 8°C for 1 week. For long term storage, aliquot and store at -20°C to -80°C.
Aliquot to avoid repeated freezing and thawing.

Images



Immunofluorescence

Image 1. Immunofluorescence of human HeLa cells stained with KCTD15 monoclonal antibody, clone AT4C3 (1 : 500) with Texas Red (Red). Nucleus was stained by Hoechst 33342 (Blue).

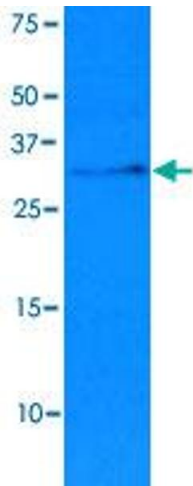


Image 2. Cell lysates of HeLa (35 ug) were resolved by SDS-PAGE, transferred to NC membrane and probed with KCTD15 monoclonal antibody, clone AT4C3 (1 : 1000). Proteins were visualized using a goat anti-mouse secondary antibody conjugated to HRP and an ECL detection system.