



[Go to Product page](#)

Datasheet for ABIN5581707
anti-KCTD6 antibody (AA 32-70)

2 Images

Overview

Quantity:	100 µL
Target:	KCTD6
Binding Specificity:	AA 32-70
Reactivity:	Human
Host:	Rabbit
Clonality:	Polyclonal
Conjugate:	This KCTD6 antibody is un-conjugated
Application:	Western Blotting (WB), Immunohistochemistry (Paraffin-embedded Sections) (IHC (p))

Product Details

Purpose:	Rabbit polyclonal antibody raised against partial synthetic protein of human KCTD6.
Immunogen:	A synthetic peptide corresponding to amino acids 32-70 of human KCTD6.
Sequence:	HLYTTSLTTL TRYPDSMLGA MFGGDFPTTR DPQGNFYFINR DGPLFRYVLN
Isotype:	IgG
Cross-Reactivity:	Human

Target Details

Target:	KCTD6
Alternative Name:	KCTD6 (KCTD6 Products)
Background:	Full Gene Name: potassium channel tetramerisation domain containing 6

Target Details

Synonyms: MGC27385

Gene ID: 200845

Application Details

Application Notes: Immunohistochemistry (1:250)
Western Blot (1:1000)
The optimal working dilution should be determined by the end user.

Restrictions: For Research Use only

Handling

Format: Liquid

Buffer: In 1X PBS , pH 7.4 (2 % sucrose, 0.09 % sodium azide).

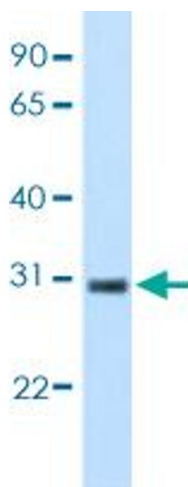
Preservative: Sodium azide

Precaution of Use: This product contains Sodium azide: a POISONOUS AND HAZARDOUS SUBSTANCE which should be handled by trained staff only.

Storage: 4 °C,-20 °C

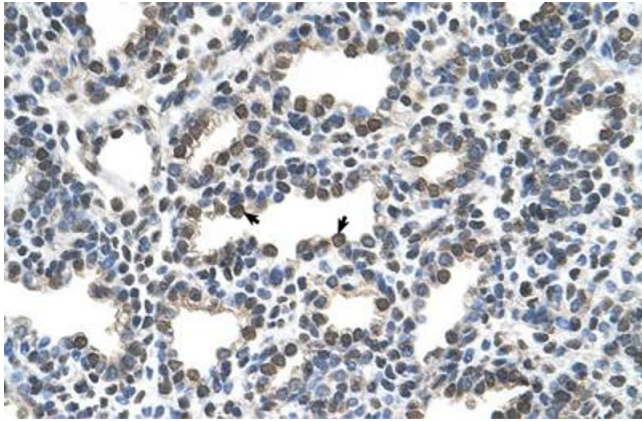
Storage Comment: Store at 4°C for up to one week. For long term storage store at -20°C.
Aliquot to avoid repeated freezing and thawing.

Images



Western Blotting

Image 1. Western blot analysis of KCTD6 transfected 293T cell lysate with KCTD6 polyclonal antibody .



Immunohistochemistry

Image 2. Immunohistochemical staining (Formalin-fixed paraffin-embedded sections) of human lung with KCTD6 polyclonal antibody .