



[Go to Product page](#)

Datasheet for ABIN5581803
anti-KIAA0556 antibody

2 Images

Overview

Quantity:	100 µL
Target:	KIAA0556
Reactivity:	Human
Host:	Rabbit
Clonality:	Polyclonal
Conjugate:	This KIAA0556 antibody is un-conjugated
Application:	Immunofluorescence (IF), Immunohistochemistry (Paraffin-embedded Sections) (IHC (p))

Product Details

Purpose:	Rabbit polyclonal antibody raised against recombinant KIAA0556.
Immunogen:	Recombinant protein corresponding to amino acids of human KIAA0556.
Sequence:	EPPVDYSDDF ELCGDVTLQA NNTSEDRPQE LRRSLELSVN LQRKQKDCSS DEYDSIEEDI LSEPEPEDPA LVGHPRHDRP PSSGDWTQKD VHGE
Isotype:	IgG
Cross-Reactivity:	Human

Target Details

Target:	KIAA0556
Alternative Name:	KIAA0556 (KIAA0556 Products)
Background:	Full Gene Name: KIAA0556

Target Details

Gene ID: 23247

Application Details

Application Notes: Immunohistochemistry (1:200-1:500)
Immunofluorescence (1-4 µg/mL)
The optimal working dilution should be determined by the end user.

Restrictions: For Research Use only

Handling

Format: Liquid

Buffer: In PBS, pH 7.2 (40 % glycerol, 0.02 % sodium azide)

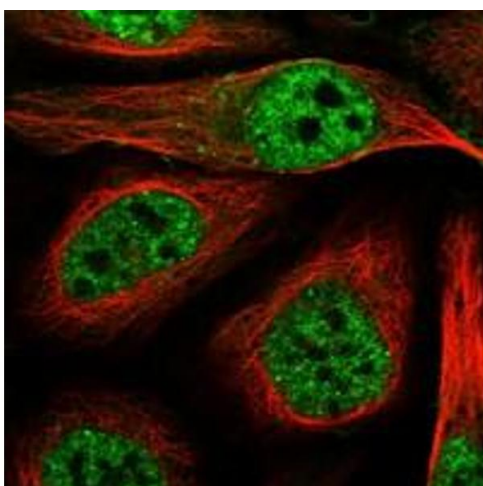
Preservative: Sodium azide

Precaution of Use: This product contains Sodium azide: a POISONOUS AND HAZARDOUS SUBSTANCE which should be handled by trained staff only.

Storage: 4 °C, -20 °C

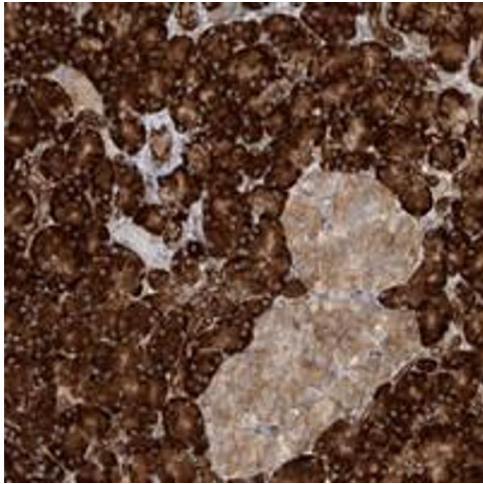
Storage Comment: Store at 4°C. For long term storage store at -20°C.
Aliquot to avoid repeated freezing and thawing.

Images



Immunofluorescence

Image 1. Immunofluorescent staining of human cell line U-2 OS with KIAA0556 polyclonal antibody at 1-4 µg/mL dilution shows positivity in nucleus but not nucleoli and plasma membrane.



Immunohistochemistry

Image 2. Immunohistochemical staining of human pancreas with KIAA0556 polyclonal antibody shows strong cytoplasmic positivity in exocrine glandular cells.