



Datasheet for ABIN5581842
anti-KIAA1683 antibody



[Go to Product page](#)

1 Image

Overview

Quantity:	100 µL
Target:	KIAA1683
Reactivity:	Human
Host:	Rabbit
Clonality:	Polyclonal
Conjugate:	This KIAA1683 antibody is un-conjugated
Application:	Immunohistochemistry (Paraffin-embedded Sections) (IHC (p))

Product Details

Purpose:	Rabbit polyclonal antibody raised against recombinant KIAA1683.
Immunogen:	Recombinant protein corresponding to amino acids of human KIAA1683.
Sequence:	FPSCDNLVLC RPOSSPLLQP PAAQGTPEPC VQGPHAARVR GLAFLPHQTV TIRFPCPVSL DAKCQPCLLT RTIRSTCLVH IEGDSVKTKR VSARTNKARA PETPLSRRYD QAVTRPSR
Isotype:	IgG
Cross-Reactivity:	Human

Target Details

Target:	KIAA1683
Alternative Name:	KIAA1683 (KIAA1683 Products)
Background:	Full Gene Name: KIAA1683

Target Details

Synonyms: MGC131731

Gene ID: 80726

Application Details

Application Notes: Immunohistochemistry (1:50-1:200)
The optimal working dilution should be determined by the end user.

Restrictions: For Research Use only

Handling

Format: Liquid

Buffer: In PBS, pH 7.2 (40 % glycerol, 0.02 % sodium azide)

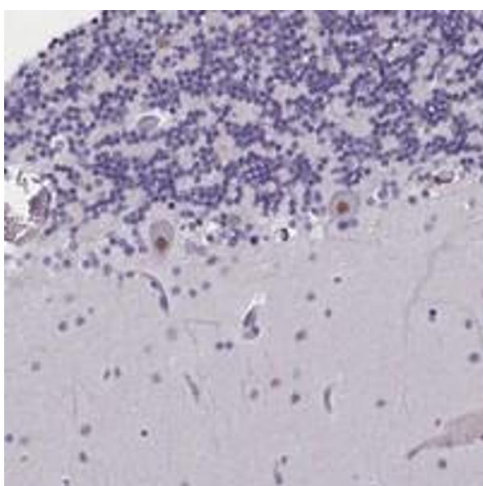
Preservative: Sodium azide

Precaution of Use: This product contains Sodium azide: a POISONOUS AND HAZARDOUS SUBSTANCE which should be handled by trained staff only.

Storage: 4 °C,-20 °C

Storage Comment: Store at 4°C. For long term storage store at -20°C.
Aliquot to avoid repeated freezing and thawing.

Images



Immunohistochemistry

Image 1. Immunohistochemical staining of human cerebellum with KIAA1683 polyclonal antibody shows moderate nuclear positivity in Purkinje cells at 1:50-1:200 dilution.