

Datasheet for ABIN5581861  
**anti-KIF11 antibody (AA 373-477)**[Go to Product page](#)

## 4 Images

## Overview

Quantity:	100 µL
Target:	KIF11
Binding Specificity:	AA 373-477
Reactivity:	Human
Host:	Rabbit
Clonality:	Polyclonal
Application:	Western Blotting (WB), Immunofluorescence (IF), Immunohistochemistry (Paraffin-embedded Sections) (IHC (p))

## Product Details

Purpose:	Rabbit polyclonal antibody raised against partial recombinant human KIF11.
Immunogen:	Recombinant protein corresponding to amino acids 373-477 of human KIF11.
Sequence:	ALIKYETEEI ERLKRDIAAA REKNGVYISE ENFRVMSGKL TVQEEQIVEL IEKIGAVEEE LNRVTELFMD NKNELDQCKS DLQNKQTQELE TTQKHLQETK LQLVK
Isotype:	IgG
Cross-Reactivity:	Human, Mouse, Rat

## Target Details

Target:	KIF11
Alternative Name:	KIF11 ( <a href="#">KIF11 Products</a> )

## Target Details

Background: Full Gene Name: kinesin family member 11  
Synonyms: EG5,HKSP,KNSL1,TRIP5

Gene ID: 3832

## Application Details

Application Notes: Immunofluorescence (1 - 4 µg/mL)  
Immunohistochemistry (Formalin/PFA-fixed paraffin-embedded sections) (1:50 - 1:200)  
Western Blot (1:100 - 1:250)  
The optimal working dilution should be determined by the end user.

Restrictions: For Research Use only

## Handling

Format: Liquid

Buffer: In PBS, pH 7.2 (40 % glycerol, 0.02 % sodium azide).

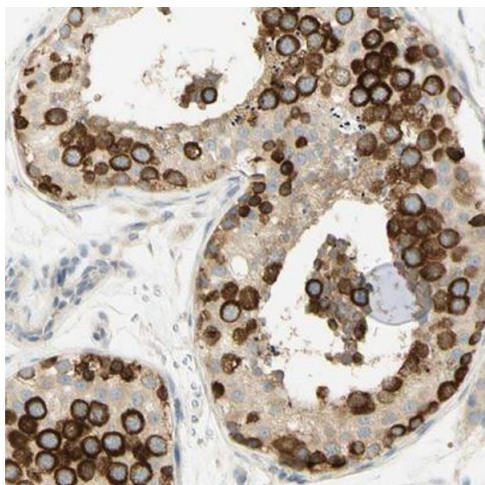
Preservative: Sodium azide

Precaution of Use: This product contains Sodium azide: a POISONOUS AND HAZARDOUS SUBSTANCE which should be handled by trained staff only.

Storage: 4 °C,-20 °C

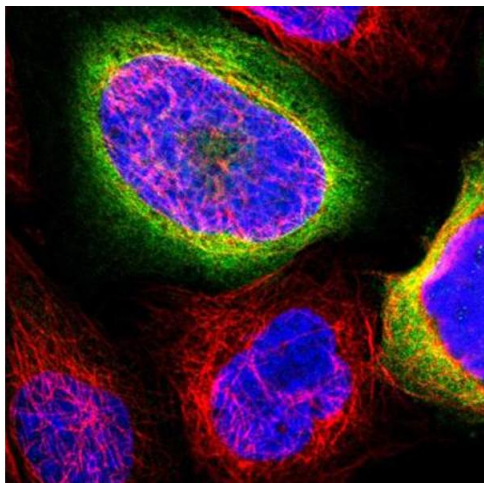
Storage Comment: Store at 4°C for short term storage. For long term storage store at -20°C.  
Aliquot to avoid repeated freezing and thawing.

## Images



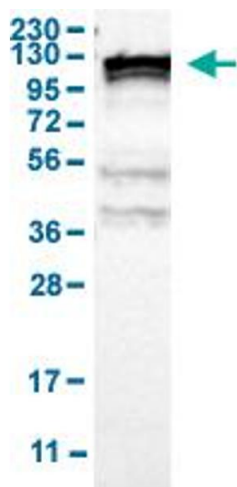
### Immunohistochemistry

**Image 1.** Immunohistochemical staining (Formalin-fixed paraffin-embedded sections) of human testis with KIF11 polyclonal antibody shows strong cytoplasmic positivity in cells of seminiferous ducts.



#### Immunofluorescence

**Image 2.** Immunofluorescent staining of human cell line A-431 with KIF11 polyclonal antibody shows positivity in cytoplasm. Antibody staining is shown in green.



#### Western Blotting

**Image 3.** Western Blot analysis of human cell line RT-4 with KIF11 polyclonal antibody .

Please check the [product details page](#) for more images. Overall 4 images are available for ABIN5581861.