

Datasheet for ABIN5581901
anti-KIN antibody (AA 230-279)[Go to Product page](#)

2 Images

Overview

Quantity:	100 µL
Target:	KIN
Binding Specificity:	AA 230-279
Reactivity:	Human
Host:	Rabbit
Clonality:	Polyclonal
Conjugate:	This KIN antibody is un-conjugated
Application:	Western Blotting (WB), Immunohistochemistry (Paraffin-embedded Sections) (IHC (p))

Product Details

Purpose:	Rabbit polyclonal antibody raised against partial synthetic protein of human KIN.
Immunogen:	A synthetic peptide corresponding to amino acids 230-279 of human KIN.
Sequence:	LKTIGSSASV KRKESSQSST QSKEKKKKKS ALDEIMEIEE EKKRTARTDY
Isotype:	IgG
Cross-Reactivity:	Human

Target Details

Target:	KIN
Alternative Name:	KIN (KIN Products)
Background:	Full Gene Name: KIN, antigenic determinant of recA protein homolog (mouse)

Target Details

Synonyms: BTCD,KIN17

Gene ID: 22944

Application Details

Application Notes: Immunohistochemistry (1:250)
Western Blot (1:1000)
The optimal working dilution should be determined by the end user.

Restrictions: For Research Use only

Handling

Format: Liquid

Buffer: In 1X PBS , pH 7.4 (2 % sucrose, 0.09 % sodium azide).

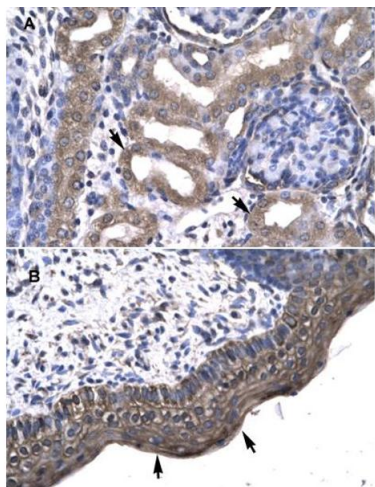
Preservative: Sodium azide

Precaution of Use: This product contains Sodium azide: a POISONOUS AND HAZARDOUS SUBSTANCE which should be handled by trained staff only.

Storage: 4 °C,-20 °C

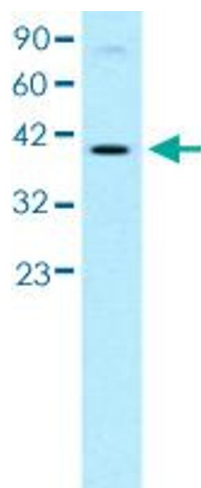
Storage Comment: Store at 4°C for up to one week. For long term storage store at -20°C.
Aliquot to avoid repeated freezing and thawing.

Images



Immunohistochemistry

Image 1. Immunohistochemical staining (Formalin-fixed paraffin-embedded sections) of (A) human kidney and (B) human spermatophore tissues with KIN polyclonal antibody



Western Blotting

Image 2. Western blot analysis of HepG2 cell lysate with KIN polyclonal antibody .