



Datasheet for ABIN5581942

## anti-KLC3 antibody



[Go to Product page](#)

### 2 Images

#### Overview

Quantity:	100 µL
Target:	KLC3
Reactivity:	Human
Host:	Rabbit
Clonality:	Polyclonal
Conjugate:	This KLC3 antibody is un-conjugated
Application:	Immunohistochemistry (Paraffin-embedded Sections) (IHC (p)), Immunofluorescence (IF)

#### Product Details

Purpose:	Rabbit polyclonal antibody raised against recombinant human KLC3.
Immunogen:	Recombinant protein corresponding to human KLC3.
Sequence:	MSVQVAAPGS AGLGPERLSP EELVRQTRQV V
Isotype:	IgG
Cross-Reactivity:	Human

#### Target Details

Target:	KLC3
Alternative Name:	KLC3 ( <a href="#">KLC3 Products</a> )
Background:	Full Gene Name: kinesin light chain 3 Synonyms: KLC2,KLC2L,KLCt,KNS2B

## Target Details

---

Gene ID: 147700

## Application Details

---

Application Notes: Immunohistochemistry (1:500-1:1000)  
Immunofluorescence (1-4 µg/mL)  
The optimal working dilution should be determined by the end user.

Restrictions: For Research Use only

## Handling

---

Format: Liquid

Buffer: In PBS, pH 7.2 (40 % glycerol, 0.02 % sodium azide)

Preservative: Sodium azide

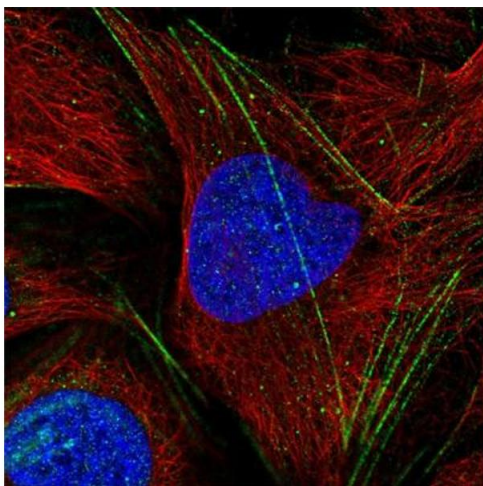
Precaution of Use: This product contains Sodium azide: a POISONOUS AND HAZARDOUS SUBSTANCE which should be handled by trained staff only.

Storage: 4 °C, -20 °C

Storage Comment: Store at 4°C. For long term storage store at -20°C.  
Aliquot to avoid repeated freezing and thawing.

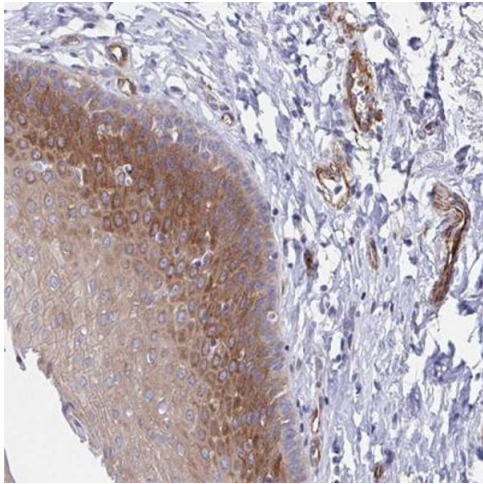
## Images

---



### Immunofluorescence

**Image 1.** Immunofluorescent staining of human cell line U-2 OS with KLC3 polyclonal antibody at 1-4 µg/mL concentration shows positivity in actin filaments.



### Immunohistochemistry

**Image 2.** Immunohistochemical staining of human esophagus with KLC3 polyclonal antibody shows moderate cytoplasmic positivity in squamous epithelial cells.