



Datasheet for ABIN5581945  
**anti-KLF14 antibody**



[Go to Product page](#)

1 Image

Overview

Quantity:	100 µL
Target:	KLF14
Reactivity:	Human
Host:	Rabbit
Clonality:	Polyclonal
Application:	Immunohistochemistry (Paraffin-embedded Sections) (IHC (p))

Product Details

Purpose:	Rabbit polyclonal antibody raised against recombinant KLF14.
Immunogen:	Recombinant protein corresponding to amino acids of human KLF14.
Sequence:	RHPTYHPDMI EYGRRRRTPR IDPPLTSEVE SSASG
Isotype:	IgG
Cross-Reactivity:	Human

Target Details

Target:	KLF14
Alternative Name:	KLF14 ( <a href="#">KLF14 Products</a> )
Background:	Full Gene Name: Kruppel-like factor 14 Synonyms: BTEB5
Gene ID:	136259

## Application Details

---

Application Notes: Immunohistochemistry (1:500-1:1000)  
The optimal working dilution should be determined by the end user.

---

Restrictions: For Research Use only

---

## Handling

---

Format: Liquid

---

Buffer: In PBS, pH 7.2 (40 % glycerol, 0.02 % sodium azide)

---

Preservative: Sodium azide

---

Precaution of Use: This product contains Sodium azide: a POISONOUS AND HAZARDOUS SUBSTANCE which should be handled by trained staff only.

---

Storage: 4 °C,-20 °C

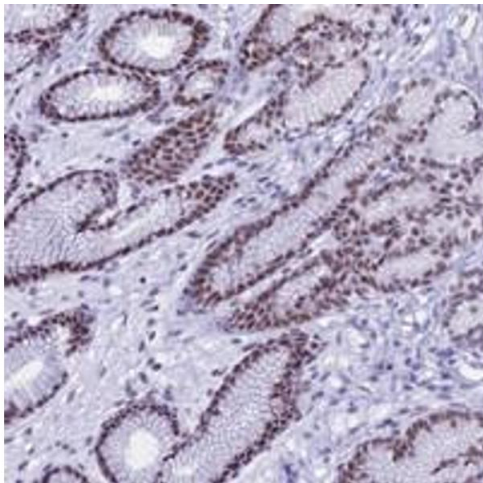
---

Storage Comment: Store at 4°C. For long term storage store at -20°C.  
Aliquot to avoid repeated freezing and thawing.

---

## Images

---



### Immunohistochemistry

**Image 1.** Immunohistochemical staining of human stomach with KLF14 polyclonal antibody shows strong nucleolar positivity in glandular cells at 1:500-1:1000 dilution.