



Datasheet for ABIN5581980
anti-KLHL25 antibody (AA 163-212)



[Go to Product page](#)

2 Images

Overview

Quantity:	100 µL
Target:	KLHL25
Binding Specificity:	AA 163-212
Reactivity:	Human
Host:	Rabbit
Clonality:	Polyclonal
Conjugate:	This KLHL25 antibody is un-conjugated
Application:	Western Blotting (WB), Immunohistochemistry (Paraffin-embedded Sections) (IHC (p))

Product Details

Purpose:	Rabbit polyclonal antibody raised against partial synthetic protein of human KLHL25.
Immunogen:	A synthetic peptide corresponding to amino acids 163-212 of human KLHL25.
Sequence:	RLYEFSWRMC LVHFETVRQS EDFNSLSKDT LLDLISSDEL ETEDERVVFE
Isotype:	IgG
Cross-Reactivity:	Human

Target Details

Target:	KLHL25
Alternative Name:	KLHL25 (KLHL25 Products)
Background:	Full Gene Name: kelch-like 25 (Drosophila)

Target Details

Synonyms: ENC-2,ENC2,FLJ12587,FLJ45015

Gene ID: 64410

Application Details

Application Notes: Immunohistochemistry (1:250)
Western Blot (1:1000)
The optimal working dilution should be determined by the end user.

Restrictions: For Research Use only

Handling

Format: Liquid

Buffer: In 1X PBS , pH 7.4 (2 % sucrose, 0.09 % sodium azide).

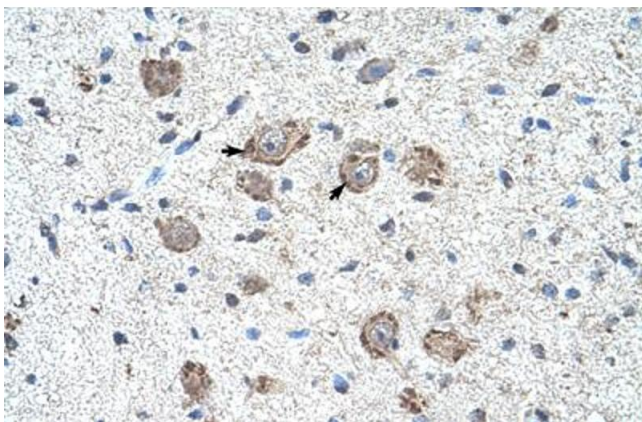
Preservative: Sodium azide

Precaution of Use: This product contains Sodium azide: a POISONOUS AND HAZARDOUS SUBSTANCE which should be handled by trained staff only.

Storage: 4 °C,-20 °C

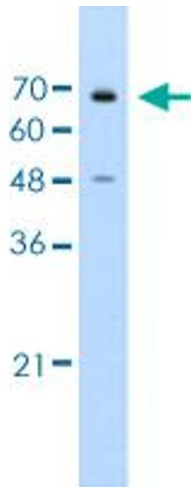
Storage Comment: Store at 4°C for up to one week. For long term storage store at -20°C.
Aliquot to avoid repeated freezing and thawing.

Images



Immunohistochemistry

Image 1. Immunohistochemical staining (Formalin-fixed paraffin-embedded sections) of human brain with KLHL25 polyclonal antibody .



Western Blotting

Image 2. Western blot analysis of Jurkat cell lysate with KLHL25 polyclonal antibody .