

Datasheet for ABIN5582051
anti-KPNA3 antibody (C-Term)[Go to Product page](#)

2 Images

Overview

Quantity:	100 µg
Target:	KPNA3
Binding Specificity:	C-Term
Reactivity:	Human, Mouse, Rat
Host:	Rabbit
Clonality:	Polyclonal
Conjugate:	This KPNA3 antibody is un-conjugated
Application:	Western Blotting (WB), ELISA, Immunocytochemistry (ICC)

Product Details

Purpose:	Rabbit polyclonal antibody raised against synthetic peptide of KPNA3.
Immunogen:	A synthetic peptide corresponding to 14 amino acids near C-terminus of human KPNA3.
Cross-Reactivity:	Human, Mouse, Rat

Target Details

Target:	KPNA3
Alternative Name:	KPNA3 (KPNA3 Products)
Background:	Full Gene Name: karyopherin alpha 3 (importin alpha 4) Synonyms: IPOA4,SRP1,SRP1gamma,SRP4,hSRP1
Gene ID:	3839

Target Details

Pathways: [Protein targeting to Nucleus](#)

Application Details

Application Notes: Western Blot (1-2 µg/mL)
Immunocytochemistry (10 µg/mL)
The optimal working dilution should be determined by the end user.

Restrictions: For Research Use only

Handling

Format: Liquid

Concentration: 1 mg/mL

Buffer: In PBS (0.02 % sodium azide)

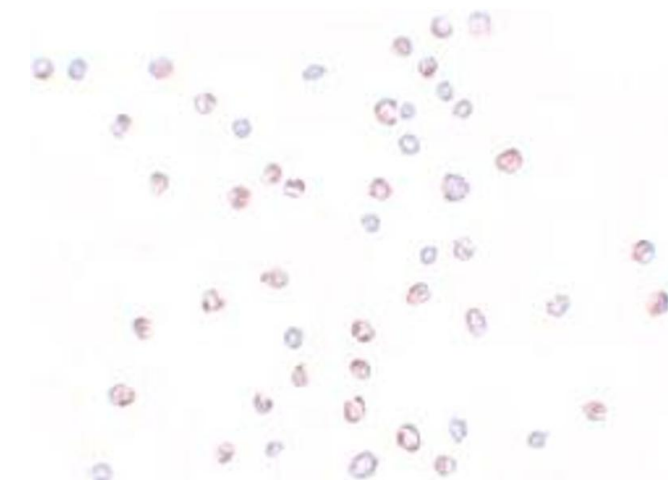
Preservative: Sodium azide

Precaution of Use: This product contains Sodium azide: a POISONOUS AND HAZARDOUS SUBSTANCE which should be handled by trained staff only.

Storage: 4 °C,-20 °C

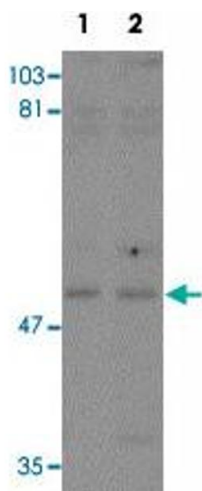
Storage Comment: Store at 4°C for three months. For long term storage store at -20°C.
Aliquot to avoid repeated freezing and thawing.

Images



Immunocytochemistry

Image 1. Immunocytochemical staining of HeLa cells with KPNA3 polyclonal antibody at 10 ug/mL.



Western Blotting

Image 2. Western blot analysis of KPNA3 in EL4 cell lysate with KPNA3 polyclonal antibody at (1) 1 and (2) 2 ug/mL.