



[Go to Product page](#)

Datasheet for ABIN5582377
anti-LAMP3 antibody (AA 173-268)

1 Image

Overview

Quantity:	100 µL
Target:	LAMP3
Binding Specificity:	AA 173-268
Reactivity:	Human
Host:	Rabbit
Clonality:	Polyclonal
Conjugate:	This LAMP3 antibody is un-conjugated
Application:	Immunohistochemistry (Paraffin-embedded Sections) (IHC (p))

Product Details

Purpose:	Rabbit polyclonal antibody raised against partial recombinant human LAMP3.
Immunogen:	Recombinant protein corresponding to amino acids 173-268 of human LAMP3.
Sequence:	SIALHKSTTG QKPVQPTHAP GTTAAAHNTT RTAAPASTVP GPTLAPQPSS VKTGIYQVLN GSRLCIKAEM GIQLIVQDKE SVFSPRRYFN IDPNAT
Isotype:	IgG
Cross-Reactivity:	Human

Target Details

Target:	LAMP3
Alternative Name:	LAMP3 (LAMP3 Products)

Target Details

Background: Full Gene Name: lysosomal-associated membrane protein 3
Synonyms: CD208,DC-LAMP,DCLAMP,LAMP,TSC403

Gene ID: 27074

Application Details

Application Notes: Immunohistochemistry (Formalin/PFA-fixed paraffin-embedded sections) (1:50 - 1:200)
The optimal working dilution should be determined by the end user.

Restrictions: For Research Use only

Handling

Format: Liquid

Buffer: In PBS, pH 7.2 (40 % glycerol, 0.02 % sodium azide).

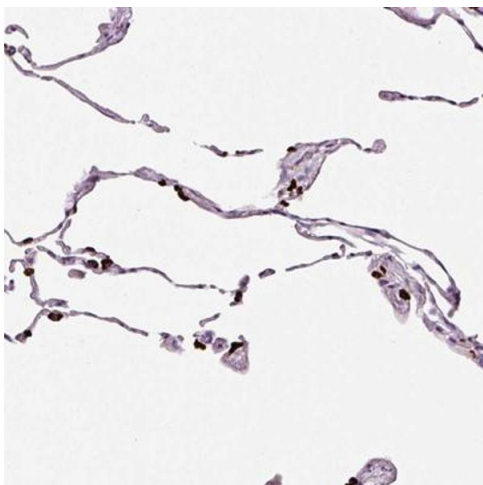
Preservative: Sodium azide

Precaution of Use: This product contains Sodium azide: a POISONOUS AND HAZARDOUS SUBSTANCE which should be handled by trained staff only.

Storage: 4 °C,-20 °C

Storage Comment: Store at 4°C for short term storage. For long term storage store at -20°C.
Aliquot to avoid repeated freezing and thawing.

Images



Immunohistochemistry

Image 1. Immunohistochemical staining (Formalin-fixed paraffin-embedded sections) of human lung with LAMP3 polyclonal antibody shows strong cytoplasmic positivity in subset of pneumocytes.