

Datasheet for ABIN5582397
anti-CERS6 antibody (N-Term)[Go to Product page](#)

2 Images

Overview

Quantity:	100 µg
Target:	CERS6
Binding Specificity:	N-Term
Reactivity:	Human, Mouse, Rat
Host:	Rabbit
Clonality:	Polyclonal
Conjugate:	This CERS6 antibody is un-conjugated
Application:	ELISA, Western Blotting (WB), Immunohistochemistry (IHC)

Product Details

Purpose:	Rabbit polyclonal antibody raised against synthetic peptide of LASS6.
Immunogen:	A synthetic peptide corresponding to N-terminus 13 amino acids of human LASS6.
Cross-Reactivity:	Human, Mouse, Rat

Target Details

Target:	CERS6
Alternative Name:	LASS6 (CERS6 Products)
Background:	Full Gene Name: LAG1 homolog, ceramide synthase 6 Synonyms: CerS6,MGC129949,MGC129950
Gene ID:	253782

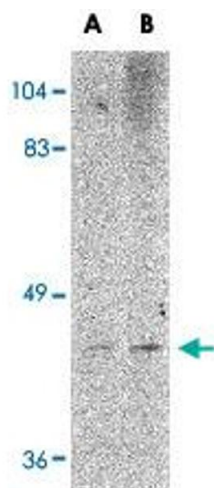
Application Details

Application Notes:	Western Blot (1-2 µg/mL) The optimal working dilution should be determined by the end user.
Restrictions:	For Research Use only

Handling

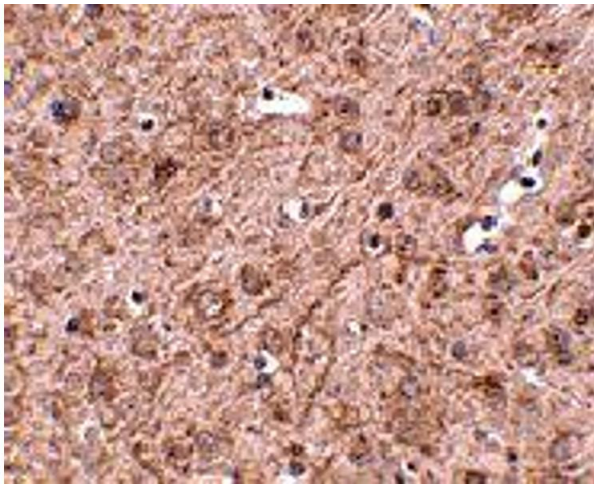
Format:	Liquid
Buffer:	In PBS (0.02 % sodium azide)
Preservative:	Sodium azide
Precaution of Use:	This product contains Sodium azide: a POISONOUS AND HAZARDOUS SUBSTANCE which should be handled by trained staff only.
Storage:	4 °C,-20 °C
Storage Comment:	Store at 4°C for three months. For long term storage store at -20°C. Aliquot to avoid repeated freezing and thawing.

Images



Western Blotting

Image 1. Western blot analysis of LASS6 in rat brain tissue lysate with LASS6 polyclonal antibody at (A) 1 and (B) 2 ug/mL .



Immunohistochemistry

Image 2. Immunohistochemistry of LASS6 in mouse brain tissue with LASS6 polyclonal antibody at 2.5 ug/mL .