

Datasheet for ABIN5582401
anti-LAT antibody (Cytoplasmic Domain)

2 Images

[Go to Product page](#)

Overview

Quantity:	50 µg
Target:	LAT
Binding Specificity:	Cytoplasmic Domain
Reactivity:	Human
Host:	Mouse
Clonality:	Monoclonal
Conjugate:	This LAT antibody is un-conjugated
Application:	Western Blotting (WB), Immunoprecipitation (IP), Immunohistochemistry (Paraffin-embedded Sections) (IHC (p))

Product Details

Purpose:	Mouse monoclonal antibody raised against recombinant human LAT.
Immunogen:	Recombinant protein corresponding to cytoplasmic domain of human LAT.
Clone:	LAT1111
Isotype:	IgG1
Cross-Reactivity:	Human

Target Details

Target:	LAT
Alternative Name:	LAT (LAT Products)

Target Details

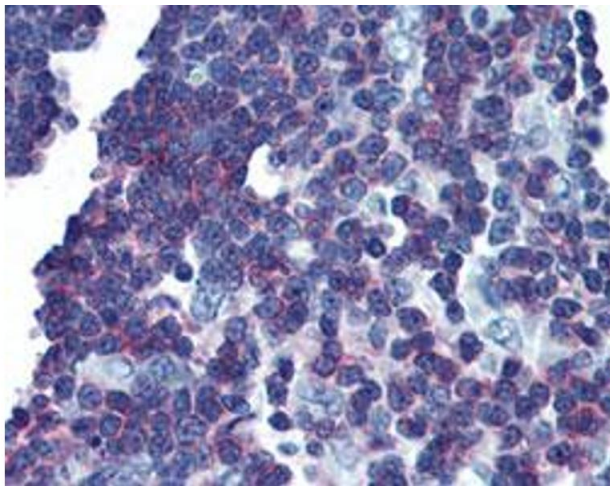
Background:	Full Gene Name: linker for activation of T cells Synonyms: LAT1,pp36
Gene ID:	27040
Pathways:	TCR Signaling , Fc-epsilon Receptor Signaling Pathway

Application Details

Application Notes:	Immunohistochemistry (Formalin/PFA-fixed paraffin-embedded sections) (10 µg/mL) Immunoprecipitation Western Blot The optimal working dilution should be determined by the end user.
Restrictions:	For Research Use only

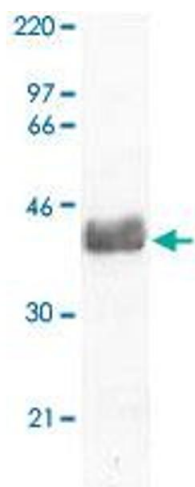
Handling

Format:	Liquid
Buffer:	In PBS, pH 7.2 (0.09 % sodium azide).
Preservative:	Sodium azide
Precaution of Use:	This product contains Sodium azide: a POISONOUS AND HAZARDOUS SUBSTANCE which should be handled by trained staff only.
Storage:	4 °C
Storage Comment:	Store at 4°C. Aliquot to avoid repeated freezing and thawing.



Immunohistochemistry

Image 1. Immunohistochemical staining (Formalin-fixed paraffin-embedded sections) of human thymus with LAT monoclonal antibody, clone LAT1111 at 10 ug/mL working concentration.



Western Blotting

Image 2. Western Blot analysis of human PBMC with LAT monoclonal antibody, clone LAT1111 followed by HRP-conjugated goat anti-mouse secondary antibody and visualized by chemiluminescence detection system.