



[Go to Product page](#)

Datasheet for ABIN5582455
anti-LDLRAD2 antibody

1 Image

Overview

Quantity:	100 µL
Target:	LDLRAD2
Reactivity:	Human
Host:	Rabbit
Clonality:	Polyclonal
Conjugate:	This LDLRAD2 antibody is un-conjugated
Application:	Immunohistochemistry (Paraffin-embedded Sections) (IHC (p))

Product Details

Purpose:	Rabbit polyclonal antibody raised against recombinant LDLRAD2.
Immunogen:	Recombinant protein corresponding to amino acids of human LDLRAD2.
Sequence:	GMDNCGDGSD QGSWSPADCR GPSPVPSQTG STDAHTSRSL TPSPALGSAG SLWIAAERSS PAGRDPTRQD AALEGSTE
Isotype:	IgG
Cross-Reactivity:	Human

Target Details

Target:	LDLRAD2
Alternative Name:	LDLRAD2 (LDLRAD2 Products)
Background:	Full Gene Name: low density lipoprotein receptor class A domain containing 2

Target Details

Gene ID: 401944

Application Details

Application Notes: Immunohistochemistry (1:200-1:500)
The optimal working dilution should be determined by the end user.

Restrictions: For Research Use only

Handling

Format: Liquid

Buffer: In PBS, pH 7.2 (40 % glycerol, 0.02 % sodium azide)

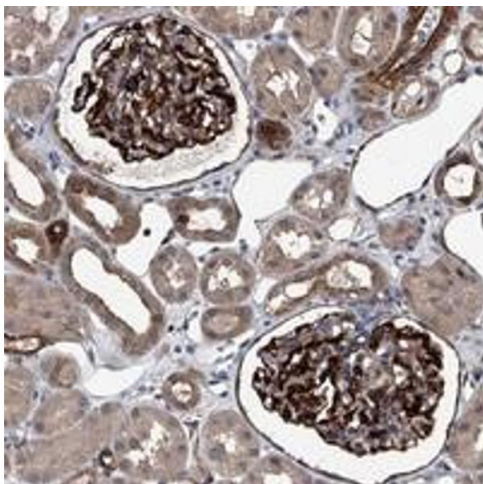
Preservative: Sodium azide

Precaution of Use: This product contains Sodium azide: a POISONOUS AND HAZARDOUS SUBSTANCE which should be handled by trained staff only.

Storage: 4 °C,-20 °C

Storage Comment: Store at 4°C. For long term storage store at -20°C.
Aliquot to avoid repeated freezing and thawing.

Images



Immunohistochemistry

Image 1. Immunohistochemical staining of human kidney with LDLRAD2 polyclonal antibody shows distinct cytoplasmic and membranous positivity in cells in glomeruli at 1:200-1:500 dilution.