

Datasheet for ABIN5582531

anti-LGR4 antibody (2nd Cytoplasmic Domain)[Go to Product page](#)**1** Image

Overview

| | |
|----------------------|---|
| Quantity: | 50 µg |
| Target: | LGR4 |
| Binding Specificity: | 2nd Cytoplasmic Domain |
| Reactivity: | Human, Orang-Utan, Gorilla |
| Host: | Rabbit |
| Clonality: | Polyclonal |
| Conjugate: | This LGR4 antibody is un-conjugated |
| Application: | Immunohistochemistry (Paraffin-embedded Sections) (IHC (p)) |

Product Details

| | |
|-----------------------------|--|
| Purpose: | Rabbit polyclonal antibody raised against synthetic peptide of LGR4. |
| Immunogen: | A synthetic peptide corresponding to 19 amino acids at 2nd cytoplasmic domain of human LGR4. |
| Specificity: | BLAST analysis of the peptide immunogen showed no homology with other human proteins. |
| Cross-Reactivity: | Gorilla, Human, Orang-Utan |
| Cross-Reactivity (Details): | BLAST analysis of the peptide immunogen showed no homology with other human proteins. |

Target Details

| | |
|-------------------|--|
| Target: | LGR4 |
| Alternative Name: | LGR4 (LGR4 Products) |

Target Details

Background: Full Gene Name: leucine-rich repeat-containing G protein-coupled receptor 4
Synonyms: GPR48

Gene ID: 55366

Application Details

Application Notes: Immunohistochemistry (Formalin/PFA-fixed paraffin-embedded sections) (4-10 µg/mL)
The optimal working dilution should be determined by the end user.

Restrictions: For Research Use only

Handling

Format: Liquid

Buffer: In PBS (0.09 % sodium azide)

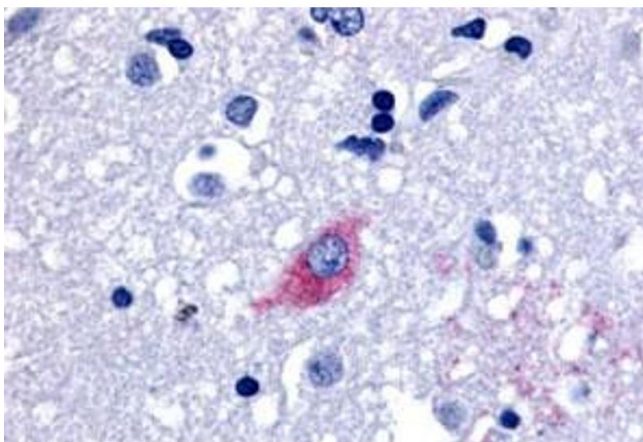
Preservative: Sodium azide

Precaution of Use: This product contains Sodium azide: a POISONOUS AND HAZARDOUS SUBSTANCE which should be handled by trained staff only.

Storage: 4 °C,-80 °C

Storage Comment: Store at 4°C. For long term storage store at -80°C.
Aliquot to avoid repeated freezing and thawing.

Images



Immunohistochemistry

Image 1. Immunohistochemical (Formalin/PFA-fixed paraffin-embedded sections) staining in human brain, neurons and glia with LGR4 polyclonal antibody . Immunohistochemistry of formalin-fixed, paraffin-embedded tissue after heat-induced antigen retrieval.