

Datasheet for ABIN5582533
anti-LGR4 antibody (Extracellular Domain)[Go to Product page](#)

1 Image

Overview

Quantity:	50 µg
Target:	LGR4
Binding Specificity:	Extracellular Domain
Reactivity:	Human, Mouse, Rat, Monkey, Rabbit, Pig
Host:	Rabbit
Clonality:	Polyclonal
Conjugate:	This LGR4 antibody is un-conjugated
Application:	Immunohistochemistry (Paraffin-embedded Sections) (IHC (p))

Product Details

Purpose:	Rabbit polyclonal antibody raised against synthetic peptide of LGR4.
Immunogen:	A synthetic peptide corresponding to 18 amino acids at N-terminal extracellular domain of human LGR4.
Specificity:	BLAST analysis of the peptide immunogen showed no homology with other human proteins.
Cross-Reactivity:	Human, Monkey, Mouse, Pig, Rabbit, Rat
Cross-Reactivity (Details):	BLAST analysis of the peptide immunogen showed no homology with other human proteins.

Target Details

Target:	LGR4
Alternative Name:	LGR4 (LGR4 Products)

Target Details

Background: Full Gene Name: leucine-rich repeat-containing G protein-coupled receptor 4
Synonyms: GPR48

Gene ID: 55366

Application Details

Application Notes: Immunohistochemistry (Formalin/PFA-fixed paraffin-embedded sections) (4 µg/mL)
The optimal working dilution should be determined by the end user.

Restrictions: For Research Use only

Handling

Format: Liquid

Buffer: In PBS (0.09 % sodium azide)

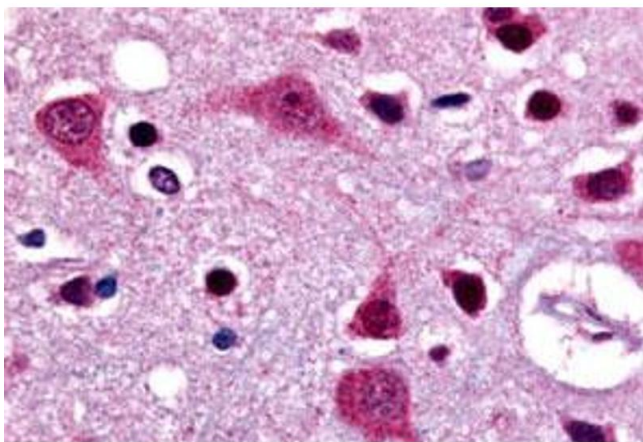
Preservative: Sodium azide

Precaution of Use: This product contains Sodium azide: a POISONOUS AND HAZARDOUS SUBSTANCE which should be handled by trained staff only.

Storage: 4 °C, -80 °C

Storage Comment: Store at 4°C. For long term storage store at -80°C.
Aliquot to avoid repeated freezing and thawing.

Images



Immunohistochemistry

Image 1. Immunohistochemical (Formalin/PFA-fixed paraffin-embedded sections) staining in human brain, caudate with LGR4 polyclonal antibody . Immunohistochemistry of formalin-fixed, paraffin-embedded tissue after heat-induced antigen retrieval.