



[Go to Product page](#)

Datasheet for ABIN5582592  
**anti-LIN28A antibody (AA 93-209)**

3 Images

### Overview

Quantity:	100 µL
Target:	LIN28A
Binding Specificity:	AA 93-209
Reactivity:	Human
Host:	Mouse
Clonality:	Monoclonal
Conjugate:	This LIN28A antibody is un-conjugated
Application:	Western Blotting (WB), ELISA, Immunofluorescence (IF), Immunohistochemistry (IHC)

### Product Details

Purpose:	Mouse monoclonal antibody raised against partial recombinant LIN28.
Immunogen:	Recombinant protein corresponding to amino acids 93-209 of human LIN28.
Clone:	6D1F9
Isotype:	IgG1
Cross-Reactivity:	Human

### Target Details

Target:	LIN28A
Alternative Name:	LIN28 ( <a href="#">LIN28A Products</a> )
Background:	Full Gene Name: lin-28 homolog (C. elegans)

## Target Details

---

Synonyms: CSDD1,FLJ12457,LIN-28,LIN28A,ZCCHC1

Gene ID: 79727

Pathways: [Stem Cell Maintenance](#)

## Application Details

---

Application Notes: ELISA (1:10000)  
Western Blot (1:500-1:2000)  
Immunohistochemistry (1:200-1:1000)  
Immunofluorescence (1:200-1:1000)  
The optimal working dilution should be determined by the end user.

Restrictions: For Research Use only

## Handling

---

Format: Liquid

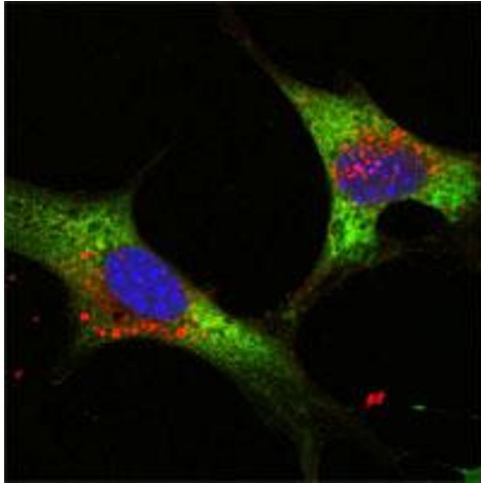
Buffer: In 10 mM PBS, pH 7.4 (0.03 % sodium azide)

Preservative: Sodium azide

Precaution of Use: This product contains Sodium azide: a POISONOUS AND HAZARDOUS SUBSTANCE which should be handled by trained staff only.

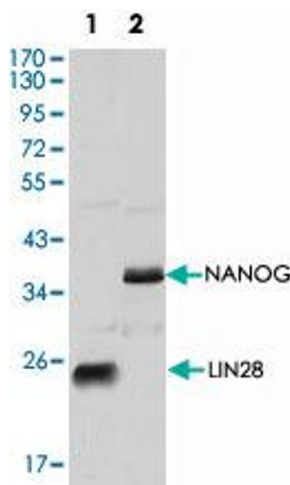
Storage: 4 °C,-20 °C

Storage Comment: Store at 4°C. For long term storage store at -20°C.  
Aliquot to avoid repeated freezing and thawing.



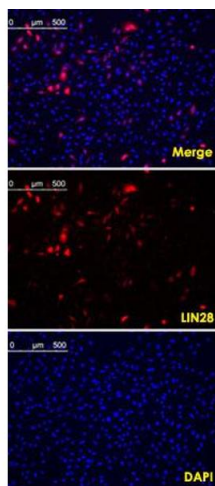
### Immunofluorescence

**Image 1.** Confocal immunofluorescence analysis of NTERA-2 cells using LIN28 monoclonal antibody, clone 6D1F9 (green). Blue: DRAQ5 fluorescent DNA dye.



### Western Blotting

**Image 2.** Western blot analysis using LIN28 monoclonal antibody, clone 6D1F9 against NTERA-2 cell lysate.



### Immunofluorescence

**Image 3.** Confocal immunofluorescence analysis of methanol fixed HeLa cells transfected with pMX construct of human LIN28, cells were analyzed ~62 hours after transfection.