

Datasheet for ABIN5582604

anti-LITAF antibody**1** Image[Go to Product page](#)

Overview

Quantity:	100 µL
Target:	LITAF
Reactivity:	Human
Host:	Mouse
Clonality:	Monoclonal
Conjugate:	This LITAF antibody is un-conjugated
Application:	Western Blotting (WB), ELISA, Immunofluorescence (IF), Immunocytochemistry (ICC)

Product Details

Purpose:	Mouse monoclonal antibody raised against full length recombinant LITAF.
Immunogen:	Recombinant protein corresponding to full length human LITAF.
Clone:	AT1F9
Isotype:	IgG2b
Cross-Reactivity:	Human

Target Details

Target:	LITAF
Alternative Name:	LITAF (LITAF Products)
Background:	Full Gene Name: lipopolysaccharide-induced TNF factor

Target Details

	Synonyms: FLJ38636,MGC116698,MGC116700,MGC116701,MGC125274,MGC125275,MGC125276,PIG7,SIMPLE,TP53I7
Gene ID:	9516
Pathways:	Cellular Response to Molecule of Bacterial Origin

Application Details

Application Notes:	The optimal working dilution should be determined by the end user.
Restrictions:	For Research Use only

Handling

Format:	Liquid
Buffer:	In PBS, pH 7.4 (10 % glycerol, 0.02 % sodium azide).
Preservative:	Sodium azide
Precaution of Use:	This product contains Sodium azide: a POISONOUS AND HAZARDOUS SUBSTANCE which should be handled by trained staff only.
Storage:	-20 °C,-80 °C
Storage Comment:	Store at 2°C to 8°C for 1 week. For long term storage, aliquot and store at -20°C to -80°C. Aliquot to avoid repeated freezing and thawing.

Images

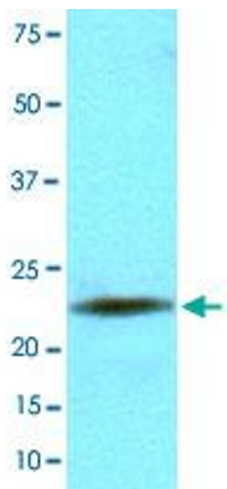


Image 1. Cell lysates of HeLa (20 ug) were resolved by SDS-PAGE, transferred to NC membrane and probed with LITAF monoclonal antibody, clone AT1F9 (1 : 2000). Proteins were visualized using a goat anti-mouse secondary antibody conjugated to HRP and an ECL detection system.