



[Go to Product page](#)

Datasheet for ABIN5582636  
**anti-MBLAC2 antibody**

2 Images

### Overview

Quantity:	100 µL
Target:	MBLAC2
Reactivity:	Human
Host:	Rabbit
Clonality:	Polyclonal
Conjugate:	This MBLAC2 antibody is un-conjugated
Application:	Immunohistochemistry (Paraffin-embedded Sections) (IHC (p)), Western Blotting (WB)

### Product Details

Purpose:	Rabbit polyclonal antibody raised against recombinant LOC153364.
Immunogen:	Recombinant protein corresponding to amino acids of human LOC153364.
Sequence:	RGDNFETVTW LSDSEVVRAP SPGWRARQFR VQAVQPTLIL QGDVINLGD RQLTVMHMPG HSRGSICLHD KDRKILFSGD VVYDGSLI
Isotype:	IgG
Cross-Reactivity:	Human

### Target Details

Target:	MBLAC2
Alternative Name:	LOC153364 ( <a href="#">MBLAC2 Products</a> )
Background:	Full Gene Name: similar to metallo-beta-lactamase superfamily protein

## Target Details

Synonyms: DKFZp686P15118,MGC46734

Gene ID: 153364

## Application Details

Application Notes: Immunohistochemistry (1:20-1:50)  
Western Blot (1:250-1:500)  
The optimal working dilution should be determined by the end user.

Restrictions: For Research Use only

## Handling

Format: Liquid

Buffer: In PBS, pH 7.2 (40 % glycerol, 0.02 % sodium azide)

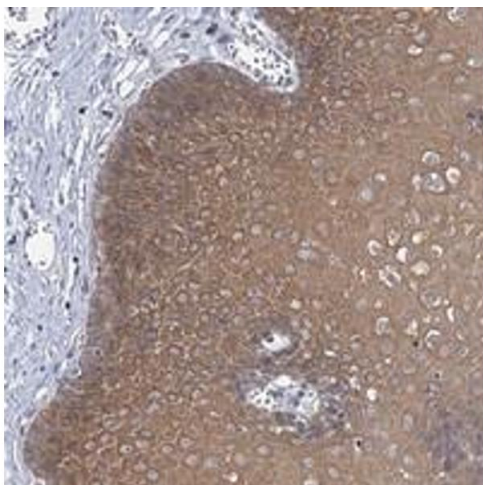
Preservative: Sodium azide

Precaution of Use: This product contains Sodium azide: a POISONOUS AND HAZARDOUS SUBSTANCE which should be handled by trained staff only.

Storage: 4 °C,-20 °C

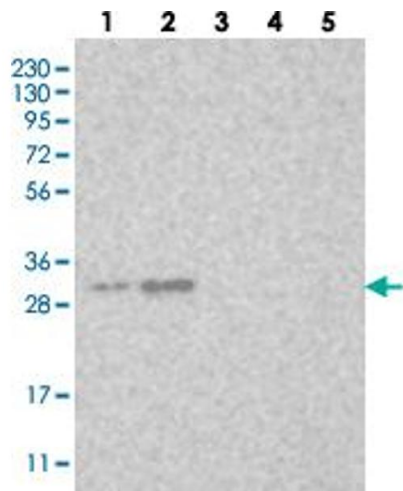
Storage Comment: Store at 4°C. For long term storage store at -20°C.  
Aliquot to avoid repeated freezing and thawing.

## Images



### Immunohistochemistry

**Image 1.** Immunohistochemical staining of human esophagus with LOC153364 polyclonal antibody shows moderate cytoplasmic positivity in squamous epithelial cells at 1:20-1:50 dilution.



### Western Blotting

**Image 2.** Western blot analysis of Lane 1: RT-4, Lane 2: U-251 MG, Lane 3: Human Plasma, Lane 4: Liver, Lane 5: Tonsil with LOC153364 polyclonal antibody at 1:250-1:500 dilution.