



[Go to Product page](#)

Datasheet for ABIN5582646
anti-PRMT10 antibody

1 Image

Overview

Quantity:	100 µL
Target:	PRMT10
Reactivity:	Human
Host:	Rabbit
Clonality:	Polyclonal
Application:	Immunohistochemistry (Paraffin-embedded Sections) (IHC (p))

Product Details

Purpose:	Rabbit polyclonal antibody raised against recombinant LOC90826.
Immunogen:	Recombinant protein corresponding to amino acids of human LOC90826.
Sequence:	HTKSLDIEIP KHIPERVSLV VTETVDAGLF GEGIVESLIH AWEHLLLPK TKGESANCEK YGKVIPASAV IFGMAVECAE IRRHHRVGIK DIAGIHLPT
Isotype:	IgG
Cross-Reactivity:	Human

Target Details

Target:	PRMT10
Alternative Name:	LOC90826 (PRMT10 Products)
Background:	Full Gene Name: hypothetical protein BC004337 Synonyms: FLJ46629

Target Details

Gene ID: 90826

Application Details

Application Notes: Immunohistochemistry (1:200-1:500)
The optimal working dilution should be determined by the end user.

Restrictions: For Research Use only

Handling

Format: Liquid

Buffer: In PBS, pH 7.2 (40 % glycerol, 0.02 % sodium azide)

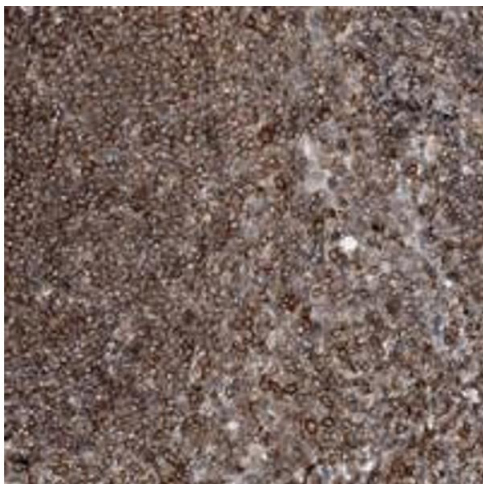
Preservative: Sodium azide

Precaution of Use: This product contains Sodium azide: a POISONOUS AND HAZARDOUS SUBSTANCE which should be handled by trained staff only.

Storage: 4 °C,-20 °C

Storage Comment: Store at 4°C. For long term storage store at -20°C.
Aliquot to avoid repeated freezing and thawing.

Images



Immunohistochemistry

Image 1. Immunohistochemical staining of human tonsil with LOC90826 polyclonal antibody shows strong cytoplasmic positivity in lymphoid cells outside reaction centra at 1:200-1:500 dilution.