



[Go to Product page](#)

Datasheet for ABIN5582658

## anti-EDG4 antibody

### 1 Image

#### Overview

Quantity:	100 µL
Target:	EDG4 (LPAR2)
Reactivity:	Human
Host:	Rat
Clonality:	Polyclonal
Conjugate:	This EDG4 antibody is un-conjugated
Application:	Western Blotting (WB), Immunofluorescence (IF), Immunohistochemistry (IHC)

#### Product Details

Purpose:	Rabbit polyclonal antibody raised against synthetic peptide of LPAR2.
Immunogen:	A synthetic peptide corresponding to LPAR2.
Specificity:	LPAR2 polyclonal antibody detects endogenous levels of LPAR2 protein.
Cross-Reactivity:	Human

#### Target Details

Target:	EDG4 (LPAR2)
Alternative Name:	LPAR2 ( <a href="#">LPAR2 Products</a> )
Background:	Full Gene Name: lysophosphatidic acid receptor 2 Synonyms: EDG-4,EDG4,FLJ93869,LPA2
Gene ID:	9170

## Application Details

Application Notes: Western Blot (1:500-1:1000)  
Immunohistochemistry (1:50-1:200)  
The optimal working dilution should be determined by the end user.

Restrictions: For Research Use only

## Handling

Format: Liquid

Concentration: 1 mg/mL

Buffer: In PBS, pH 7.2 (0.05 % sodium azide)

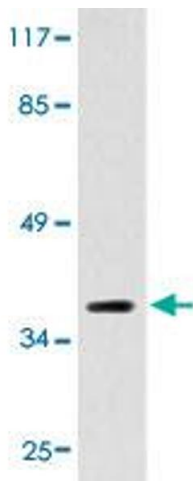
Preservative: Sodium azide

Precaution of Use: This product contains Sodium azide: a POISONOUS AND HAZARDOUS SUBSTANCE which should be handled by trained staff only.

Storage: 4 °C, -20 °C

Storage Comment: Store at 4°C. For long term storage store at -20°C.  
Aliquot to avoid repeated freezing and thawing.

## Images



### Western Blotting

**Image 1.** Western blot analysis of COLO 205 cell extracts with LPAR2 polyclonal antibody .