

Datasheet for ABIN5582668

anti-LPAR4 antibody (3rd Cytoplasmic Domain)[Go to Product page](#)**1** Image

Overview

Quantity:	50 µg
Target:	LPAR4
Binding Specificity:	3rd Cytoplasmic Domain
Reactivity:	Human, Mouse, Rat, Dog, Rabbit, Horse, Monkey, Hamster, Gorilla
Host:	Rabbit
Clonality:	Polyclonal
Conjugate:	This LPAR4 antibody is un-conjugated
Application:	Immunohistochemistry (Paraffin-embedded Sections) (IHC (p))

Product Details

Purpose:	Rabbit polyclonal antibody raised against synthetic peptide of LPAR4.
Immunogen:	A synthetic peptide corresponding to 17 amino acids at 3rd cytoplasmic domain of human LPAR4.
Specificity:	BLAST analysis of the peptide immunogen showed no homology with other human proteins.
Cross-Reactivity:	Dog, Gorilla, Hamster, Horse, Human, Monkey, Mouse, Rabbit, Rat
Cross-Reactivity (Details):	BLAST analysis of the peptide immunogen showed no homology with other human proteins.

Target Details

Target:	LPAR4
Alternative Name:	LPAR4 (LPAR4 Products)

Target Details

Background: Full Gene Name: lysophosphatidic acid receptor 4
Synonyms: GPR23,LPA4,P2RY9,P2Y5-LIKE,P2Y9

Gene ID: 2846

Application Details

Application Notes: Immunohistochemistry (Formalin/PFA-fixed paraffin-embedded sections) (4 µg/mL)
The optimal working dilution should be determined by the end user.

Restrictions: For Research Use only

Handling

Format: Liquid

Buffer: In PBS (0.09 % sodium azide)

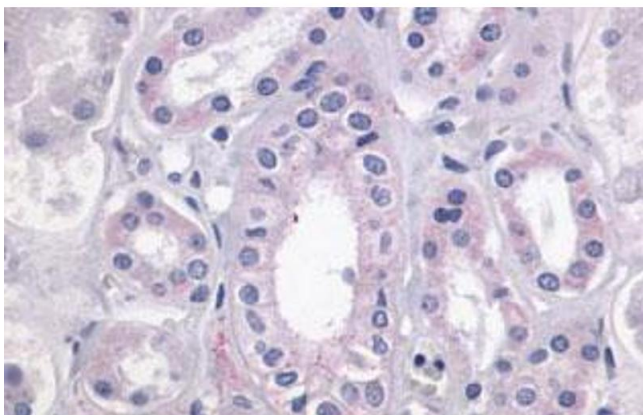
Preservative: Sodium azide

Precaution of Use: This product contains Sodium azide: a POISONOUS AND HAZARDOUS SUBSTANCE which should be handled by trained staff only.

Storage: 4 °C,-80 °C

Storage Comment: Store at 4°C. For long term storage store at -80°C.
Aliquot to avoid repeated freezing and thawing.

Images



Immunohistochemistry

Image 1. Immunohistochemical (Formalin/PFA-fixed paraffin-embedded sections) staining in human kidney with LPAR4 polyclonal antibody . Immunohistochemistry of formalin-fixed, paraffin-embedded tissue after heat-induced antigen retrieval.