



Datasheet for ABIN5582735  
**anti-LRRC3 antibody**



[Go to Product page](#)

1 Image

Overview

Quantity:	100 µL
Target:	LRRC3
Reactivity:	Human
Host:	Rabbit
Clonality:	Polyclonal
Conjugate:	This LRRC3 antibody is un-conjugated
Application:	Immunohistochemistry (Paraffin-embedded Sections) (IHC (p))

Product Details

Purpose:	Rabbit polyclonal antibody raised against recombinant LRRC3.
Immunogen:	Recombinant protein corresponding to amino acids of human LRRC3.
Sequence:	GAVAVFCSLR GLQEVPEIP ANTVLLK LDA NKISHLPDGA FQHLHRLREL DLSHNAIEAI GSATFAGLAG GLRLDLSYN RIQRIPKDAL GKLSAKIRLS HNPLHCECAL QEALWELKLD PDSVDEIACH TSVQEEFVGK P
Isotype:	IgG
Cross-Reactivity:	Human

Target Details

Target:	LRRC3
Alternative Name:	LRRC3 ( <a href="#">LRRC3 Products</a> )

## Target Details

Background: Full Gene Name: leucine rich repeat containing 3  
Synonyms: C21orf102

Gene ID: 81543

## Application Details

Application Notes: Immunohistochemistry (1:200-1:500)  
The optimal working dilution should be determined by the end user.

Restrictions: For Research Use only

## Handling

Format: Liquid

Buffer: In PBS, pH 7.2 (40 % glycerol, 0.02 % sodium azide)

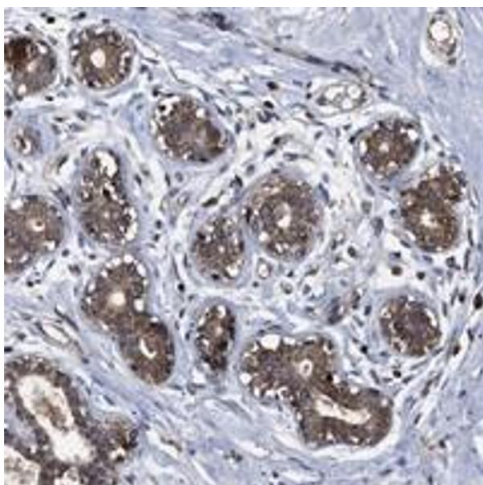
Preservative: Sodium azide

Precaution of Use: This product contains Sodium azide: a POISONOUS AND HAZARDOUS SUBSTANCE which should be handled by trained staff only.

Storage: 4 °C,-20 °C

Storage Comment: Store at 4°C. For long term storage store at -20°C.  
Aliquot to avoid repeated freezing and thawing.

## Images



### Immunohistochemistry

**Image 1.** Immunohistochemical staining of human breast with LRRC3 polyclonal antibody shows cytoplasmic positivity in glandular cells at 1:200-1:500 dilution.