



[Go to Product page](#)

Datasheet for ABIN5582740
anti-LRRC37B antibody

2 Images

Overview

Quantity:	100 µL
Target:	LRRC37B
Reactivity:	Human
Host:	Rabbit
Clonality:	Polyclonal
Conjugate:	This LRRC37B antibody is un-conjugated
Application:	Immunohistochemistry (Paraffin-embedded Sections) (IHC (p)), Immunofluorescence (IF)

Product Details

Purpose:	Rabbit polyclonal antibody raised against recombinant LRRC37B.
Immunogen:	Recombinant protein corresponding to amino acids of human LRRC37B.
Sequence:	PFLAAHQDLN DKRTPEERLP EVVPLLNRDQ NQALVQLPRL KVVQTTDLDR AAGHQADEIL VPLDSKVSRL TKFVVSPKLN KKDLAERWSL PEIVGIPH
Isotype:	IgG
Cross-Reactivity:	Human

Target Details

Target:	LRRC37B
Alternative Name:	LRRC37B (LRRC37B Products)
Background:	Full Gene Name: leucine rich repeat containing 37B

Target Details

Gene ID: 114659

Application Details

Application Notes: Immunohistochemistry (1:50-1:200)
Immunofluorescence (1-4 µg/mL)
The optimal working dilution should be determined by the end user.

Restrictions: For Research Use only

Handling

Format: Liquid

Buffer: In PBS, pH 7.2 (40 % glycerol, 0.02 % sodium azide)

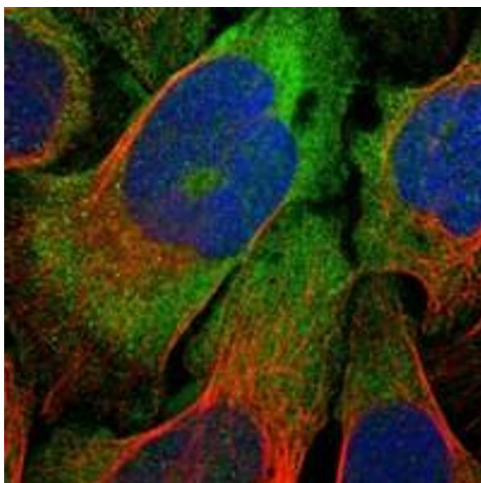
Preservative: Sodium azide

Precaution of Use: This product contains Sodium azide: a POISONOUS AND HAZARDOUS SUBSTANCE which should be handled by trained staff only.

Storage: 4 °C, -20 °C

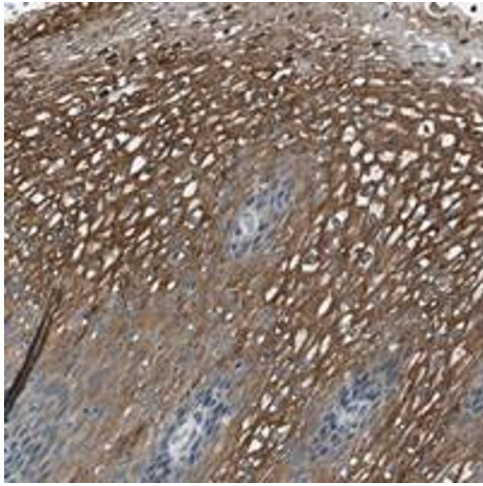
Storage Comment: Store at 4°C. For long term storage store at -20°C.
Aliquot to avoid repeated freezing and thawing.

Images



Immunofluorescence

Image 1. Immunofluorescent staining of human cell line U-2 OS with LRRC37B polyclonal antibody at 1-4 µg/mL dilution shows positivity in cytoplasm.



Immunohistochemistry

Image 2. Immunohistochemical staining of human esophagus with LRRRC37B polyclonal antibody shows distinct cytoplasmic positivity in squamous epithelial cells.