



[Go to Product page](#)

Datasheet for ABIN5582749

## anti-LRRC55 antibody

### 1 Image

#### Overview

Quantity:	100 µL
Target:	LRRC55
Reactivity:	Human
Host:	Rabbit
Clonality:	Polyclonal
Conjugate:	This LRRC55 antibody is un-conjugated
Application:	Immunohistochemistry (Paraffin-embedded Sections) (IHC (p))

#### Product Details

Purpose:	Rabbit polyclonal antibody raised against recombinant LRRC55.
Immunogen:	Recombinant protein corresponding to amino acids of human LRRC55.
Sequence:	RLAHLDLSDYN NFSHVPMDF QEAHGLVHID LSHNPWLRRV HPQAFQGLMQ LRDLDLSYGG LAFLSLEALE GLPGLVTLQI GGNPWVCGCT MEPLLKWLRLN RIQRCTADSQ
Isotype:	IgG
Cross-Reactivity:	Human

#### Target Details

Target:	LRRC55
Alternative Name:	LRRC55 ( <a href="#">LRRC55 Products</a> )
Background:	Full Gene Name: leucine rich repeat containing 55

## Target Details

---

Synonyms: FLJ45686

Gene ID: 219527

## Application Details

---

Application Notes: Immunohistochemistry (1:20-1:50)  
The optimal working dilution should be determined by the end user.

Restrictions: For Research Use only

## Handling

---

Format: Liquid

Buffer: In PBS, pH 7.2 (40 % glycerol, 0.02 % sodium azide)

Preservative: Sodium azide

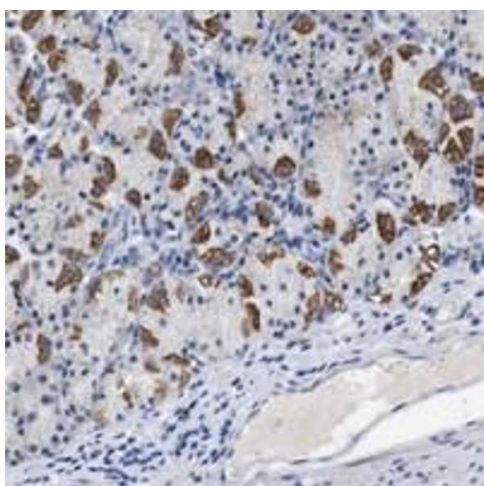
Precaution of Use: This product contains Sodium azide: a POISONOUS AND HAZARDOUS SUBSTANCE which should be handled by trained staff only.

Storage: 4 °C, -20 °C

Storage Comment: Store at 4°C. For long term storage store at -20°C.  
Aliquot to avoid repeated freezing and thawing.

## Images

---



### Immunohistochemistry

**Image 1.** Immunohistochemical staining of human stomach with LRRC55 polyclonal antibody shows strong cytoplasmic positivity in parietal cells.