



[Go to Product page](#)

Datasheet for ABIN5582756
anti-PPP1R37 antibody

2 Images

Overview

Quantity:	100 µL
Target:	PPP1R37
Reactivity:	Human
Host:	Rabbit
Clonality:	Polyclonal
Conjugate:	This PPP1R37 antibody is un-conjugated
Application:	Western Blotting (WB), Immunohistochemistry (Paraffin-embedded Sections) (IHC (p))

Product Details

Purpose:	Rabbit polyclonal antibody raised against recombinant LRRC68.
Immunogen:	Recombinant protein corresponding to amino acids of human LRRC68.
Sequence:	TVDEVIGAYK QACQKLNCRQ IPKLLRQLQE FTDLGHRLDC LDLKGEKLDY KTCEALEEVF KRLQFKVVDL EQTNLDEDGA SALFDMIEYY ESATHL
Isotype:	IgG
Cross-Reactivity:	Human

Target Details

Target:	PPP1R37
Alternative Name:	LRRC68 (PPP1R37 Products)
Background:	Full Gene Name: leucine rich repeat containing 68

Target Details

Synonyms: KIAA1986

Gene ID: 284352

Application Details

Application Notes: Immunohistochemistry (1:500-1:1000)
Western Blot (1:100-1:250)
The optimal working dilution should be determined by the end user.

Restrictions: For Research Use only

Handling

Format: Liquid

Buffer: In PBS, pH 7.2, (40 % glycerol, 0.02 % sodium azide)

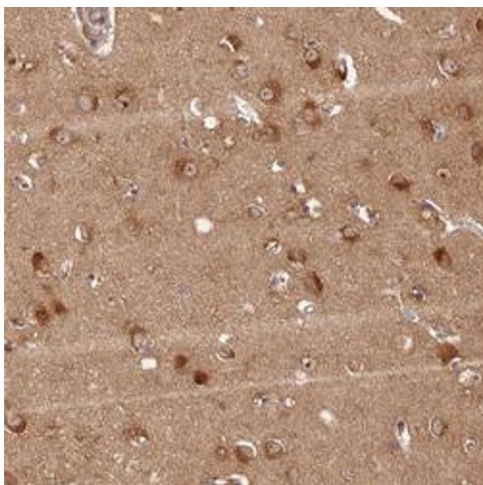
Preservative: Sodium azide

Precaution of Use: This product contains Sodium azide: a POISONOUS AND HAZARDOUS SUBSTANCE which should be handled by trained staff only.

Storage: 4 °C,-20 °C

Storage Comment: Store at 4°C. For long term storage store at -20°C.
Aliquot to avoid repeated freezing and thawing.

Images



Immunohistochemistry

Image 1. Immunohistochemical staining of human cerebral cortex with LRRC68 polyclonal antibody shows strong cytoplasmic positivity in neuronal cells at 1:100-1:250 dilution.



Western Blotting

Image 2. Western blot analysis of Lane 1: RT-4, Lane 2: U-251 MG, Lane 3: Human Plasma, Lane 4: Liver, Lane 5: Tonsil with LRRC68 polyclonal antibody at 1:100-1:250 dilution.