



[Go to Product page](#)

Datasheet for ABIN5582758
anti-LRRC72 antibody

1 Image

Overview

Quantity:	100 µL
Target:	LRRC72
Reactivity:	Human
Host:	Rabbit
Clonality:	Polyclonal
Conjugate:	This LRRC72 antibody is un-conjugated
Application:	Immunohistochemistry (Paraffin-embedded Sections) (IHC (p))

Product Details

Purpose:	Rabbit polyclonal antibody raised against recombinant LRRC72.
Immunogen:	Recombinant protein corresponding to amino acids of human LRRC72.
Sequence:	SIAFGGKVDA SWDPKSPFKQ KPAQRVPSDF AFANNVDKTV LDDPEDAVFV RSMKRSVMTL TSMNWDTVPT REERYLEEEG TETAQMLTVT
Isotype:	IgG
Cross-Reactivity:	Human

Target Details

Target:	LRRC72
Alternative Name:	LRRC72 (LRRC72 Products)
Background:	Full Gene Name: leucine rich repeat containing 72

Target Details

Gene ID: 100506049

Application Details

Application Notes: Immunohistochemistry (1:200-1:500)
The optimal working dilution should be determined by the end user.

Restrictions: For Research Use only

Handling

Format: Liquid

Buffer: In PBS, pH 7.2 (40 % glycerol, 0.02 % sodium azide)

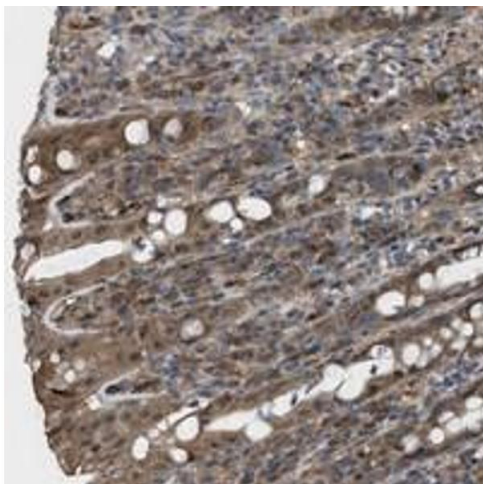
Preservative: Sodium azide

Precaution of Use: This product contains Sodium azide: a POISONOUS AND HAZARDOUS SUBSTANCE which should be handled by trained staff only.

Storage: 4 °C,-20 °C

Storage Comment: Store at 4°C. For long term storage store at -20°C.
Aliquot to avoid repeated freezing and thawing.

Images



Immunohistochemistry

Image 1. Immunohistochemical staining of human rectum with LRRC72 polyclonal antibody shows moderate positivity in glandular cells.