

Datasheet for ABIN5582798

anti-Leukotriene B4 Receptor/BLT antibody (Cytoplasmic Domain)[Go to Product page](#)**1** Image

Overview

Quantity:	50 µg
Target:	Leukotriene B4 Receptor/BLT (LTB4R)
Binding Specificity:	Cytoplasmic Domain
Reactivity:	Human, Mouse, Rat, Monkey, Gorilla, Rabbit, Hamster, Horse
Host:	Rabbit
Clonality:	Polyclonal
Conjugate:	This Leukotriene B4 Receptor/BLT antibody is un-conjugated
Application:	Immunohistochemistry (Paraffin-embedded Sections) (IHC (p))

Product Details

Purpose:	Rabbit polyclonal antibody raised against synthetic peptide of LTB4R.
Immunogen:	A synthetic peptide corresponding to 16 amino acids at cytoplasmic domain of human LTB4R.
Specificity:	BLAST analysis of the peptide immunogen showed no homology with other human proteins.
Cross-Reactivity:	Gorilla, Hamster, Horse, Human, Monkey, Mouse, Rabbit, Rat
Cross-Reactivity (Details):	BLAST analysis of the peptide immunogen showed no homology with other human proteins.

Target Details

Target:	Leukotriene B4 Receptor/BLT (LTB4R)
Alternative Name:	LTB4R (LTB4R Products)
Background:	Full Gene Name: leukotriene B4 receptor

Target Details

Synonyms: BLT1,BLTR,CMKRL1,GPR16,LTB4R1,LTBR1,P2RY7,P2Y7

Gene ID: 1241

Application Details

Application Notes: Immunohistochemistry (Formalin/PFA-fixed paraffin-embedded sections) (5-10 µg/mL)
The optimal working dilution should be determined by the end user.

Restrictions: For Research Use only

Handling

Format: Liquid

Buffer: In PBS (0.09 % sodium azide)

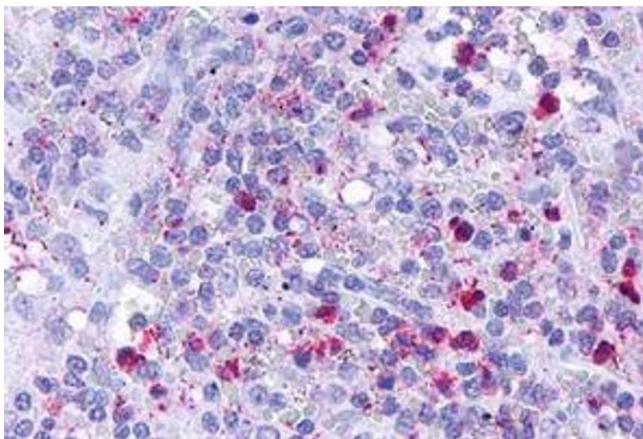
Preservative: Sodium azide

Precaution of Use: This product contains Sodium azide: a POISONOUS AND HAZARDOUS SUBSTANCE which should be handled by trained staff only.

Storage: 4 °C,-80 °C

Storage Comment: Store at 4°C. For long term storage store at -80°C.
Aliquot to avoid repeated freezing and thawing.

Images



Immunohistochemistry

Image 1. Immunohistochemical staining of human spleen, red pulp with LTB4R polyclonal antibody . Immunohistochemistry of formalin-fixed, paraffin-embedded tissue after heat-induced antigen retrieval.