



[Go to Product page](#)

Datasheet for ABIN5582814

anti-LTV1 antibody

3 Images

Overview

Quantity:	100 µL
Target:	LTV1
Reactivity:	Human
Host:	Rabbit
Clonality:	Polyclonal
Conjugate:	This LTV1 antibody is un-conjugated
Application:	Western Blotting (WB), Immunohistochemistry (Paraffin-embedded Sections) (IHC (p)), Immunofluorescence (IF)

Product Details

Purpose:	Rabbit polyclonal antibody raised against recombinant LTV1.
Immunogen:	Recombinant protein corresponding to amino acids of human LTV1.
Sequence:	ATGEEEGMDI QKSENEEDDSE WEDVDDEKGD SNDDYDSAGL LSDEDCMSVP GKTHRAIADH LFWSEETKSR FTEYSM
Isotype:	IgG
Cross-Reactivity:	Human

Target Details

Target:	LTV1
Alternative Name:	LTV1 (LTV1 Products)

Target Details

Background: Full Gene Name: LTV1 homolog (*S. cerevisiae*)
Synonyms: C6orf93,FLJ14909,dJ468K18.4

Gene ID: 84946

Application Details

Application Notes: Immunohistochemistry (1:500-1:1000)
Western Blot (1:250-1:500)
Immunofluorescence (1-4 µg/mL)
The optimal working dilution should be determined by the end user.

Restrictions: For Research Use only

Handling

Format: Liquid

Buffer: In PBS, pH 7.2 (40 % glycerol, 0.02 % sodium azide)

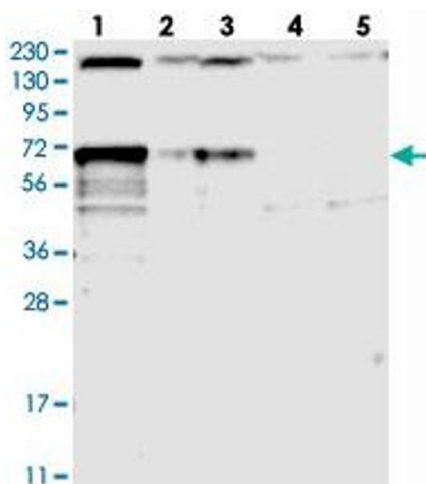
Preservative: Sodium azide

Precaution of Use: This product contains Sodium azide: a POISONOUS AND HAZARDOUS SUBSTANCE which should be handled by trained staff only.

Storage: 4 °C,-20 °C

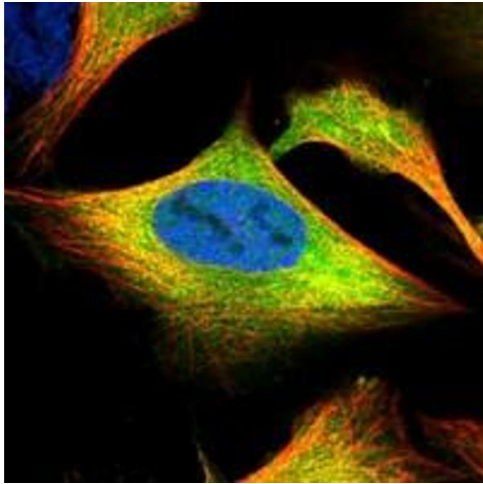
Storage Comment: Store at 4°C. For long term storage store at -20°C.
Aliquot to avoid repeated freezing and thawing.

Images



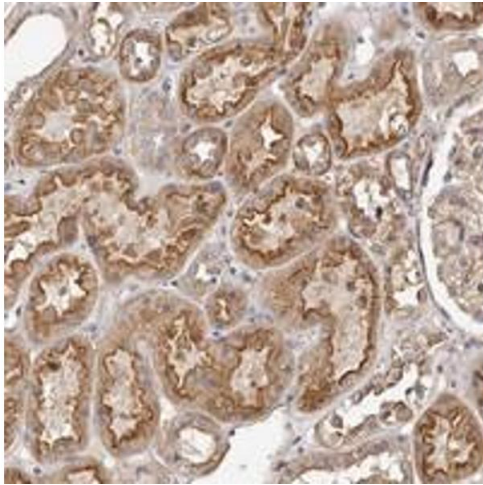
Western Blotting

Image 1. Western blot analysis of Lane 1: RT-4, Lane 2: U-251 MG, Lane 3: Human Plasma, Lane 4: Liver, Lane 5: Tonsil with LTV1 polyclonal antibody at 1:250-1:500 dilution.



Immunofluorescence

Image 2. Immunofluorescent staining of human cell line U-2 OS with LTV1 polyclonal antibody at 1-4 ug/mL dilution shows positivity in cytoplasm.



Immunohistochemistry

Image 3. Immunohistochemical staining of human kidney with LTV1 polyclonal antibody shows moderate cytoplasmic and membranous positivity in cells in tubules at 1:500-1:1000 dilution.