

Datasheet for ABIN5582827

anti-Sca-1/Ly-6A/E antibody (APC)[Go to Product page](#)**1** Image

Overview

Quantity:	100 µg
Target:	Sca-1/Ly-6A/E (Ly6a)
Reactivity:	Mouse
Host:	Rat
Clonality:	Monoclonal
Conjugate:	This Sca-1/Ly-6A/E antibody is conjugated to APC
Application:	Flow Cytometry (FACS), Western Blotting (WB), Immunoprecipitation (IP)

Product Details

Purpose:	Rat monoclonal antibody raised against native Ly6a.
Immunogen:	Native purified Ly6a from IL-2-dependent mouse T-cell line CTL-L.
Clone:	D7
Isotype:	IgG2a
Specificity:	Ly-6A.2 and Ly-6E.1, allelic members of the Ly-6 multigene family, Mr 18 KDa.
Cross-Reactivity:	Mouse

Target Details

Target:	Sca-1/Ly-6A/E (Ly6a)
Alternative Name:	Ly6a (Ly6a Products)
Background:	Full Gene Name: lymphocyte antigen 6 complex, locus A

Target Details

	Synonyms: Ly-6A.2, Ly-6A/E, Ly-6E.1, Sca-1, Sca1, TAP
Gene ID:	110454
Pathways:	Sensory Perception of Sound , Activated T Cell Proliferation

Application Details

Application Notes:	Flow Cytometry (0.2 µg/10 ⁶ cells) The optimal working dilution should be determined by the end user.
Restrictions:	For Research Use only

Handling

Format:	Liquid
Buffer:	In PBS (0.09 % sodium azide)
Preservative:	Sodium azide
Precaution of Use:	This product contains Sodium azide: a POISONOUS AND HAZARDOUS SUBSTANCE which should be handled by trained staff only.
Storage:	4 °C
Storage Comment:	Store in the dark at 4°C. Do not freeze. Avoid prolonged exposure to light. Aliquot to avoid repeated freezing and thawing.

Images

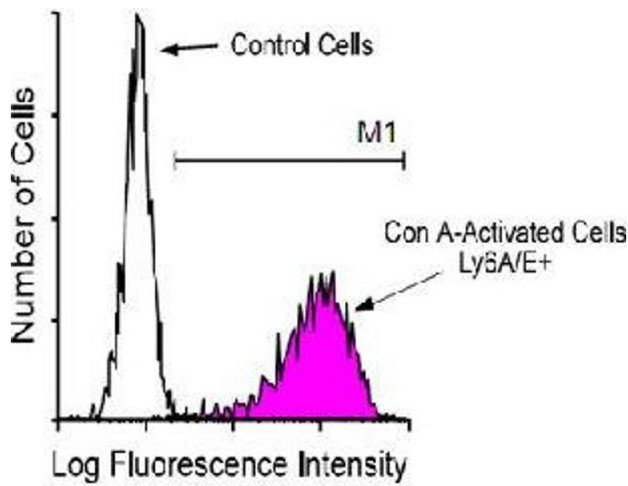


Image 1. BALB/c spleen cells were activated by incubation for 48 hours with concanavalin-A. After harvesting, the cells were stained with Ly6a monoclonal antibody, clone D7 (FITC) , and activated cells were gated and analyzed on a FACScan™ flow cytometer.