



[Go to Product page](#)

Datasheet for ABIN5582833

## anti-Ly6C antibody

### 1 Image

#### Overview

Quantity:	500 µg
Target:	Ly6C (Ly-6C)
Reactivity:	Mouse
Host:	Rat
Clonality:	Monoclonal
Conjugate:	This Ly6C antibody is un-conjugated
Application:	Flow Cytometry (FACS), Immunohistochemistry (Frozen Sections) (IHC (fro))

#### Product Details

Purpose:	Rat monoclonal antibody raised against native Ly6c1.
Immunogen:	Native purified Ly6c1 from L3 cells.
Clone:	HK1-4
Isotype:	IgG2
Specificity:	Murine Ly-6C, Mr 18 KDa.
Cross-Reactivity:	Mouse

#### Target Details

Target:	Ly6C (Ly-6C)
Alternative Name:	Ly6c1 ( <a href="#">Ly-6C Products</a> )
Background:	Full Gene Name: lymphocyte antigen 6 complex, locus C1

## Target Details

Synonyms: AA682074,AA959465,Ly-6C,Ly6c

Gene ID: 17067

## Application Details

Application Notes: Flow Cytometry (1  $\mu\text{g}/10^6$  cells)  
The optimal working dilution should be determined by the end user.

Restrictions: For Research Use only

## Handling

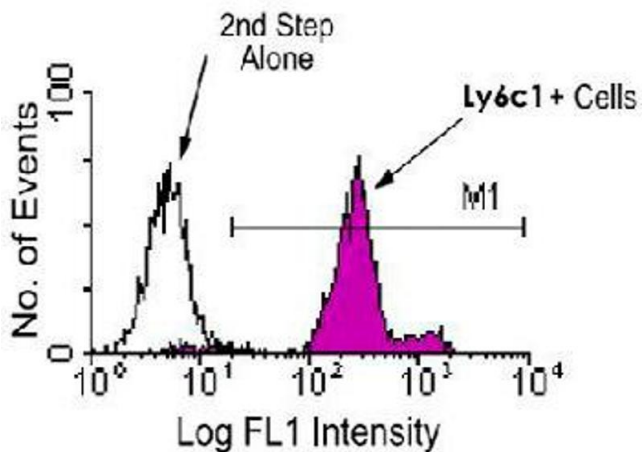
Format: Liquid

Buffer: In 100 mM BBS, pH 8.2

Storage: 4 °C

Storage Comment: Store at 4°C.

## Images



**Image 1.** Bone marrow cells from C57BL/6 mice were labeled with Ly6c1 monoclonal antibody, clone HK1.4 and then stained with goat anti-rat IgG-FITC. Large cells were gated and analyzed by flow cytometry.