

Datasheet for ABIN5582844

**anti-LY6G5C antibody**[Go to Product page](#)**1** Image

## Overview

Quantity:	100 µL
Target:	LY6G5C
Reactivity:	Human
Host:	Rabbit
Clonality:	Polyclonal
Conjugate:	This LY6G5C antibody is un-conjugated
Application:	Immunohistochemistry (Paraffin-embedded Sections) (IHC (p))

## Product Details

Purpose:	Rabbit polyclonal antibody raised against recombinant LY6G5C.
Immunogen:	Recombinant protein corresponding to amino acids of human LY6G5C.
Sequence:	ADLPSCWGAG PCYTGHKVG A LRRDTVICCC RHGDYSTPCL FTPGKPSRNP SPWKRTLWT
Isotype:	IgG
Cross-Reactivity:	Human

## Target Details

Target:	LY6G5C
Alternative Name:	LY6G5C ( <a href="#">LY6G5C Products</a> )
Background:	Full Gene Name: lymphocyte antigen 6 complex, locus G5C Synonyms: C6orf20,G5c,LY6G5CA,LY6G5CB,NG33

## Target Details

Gene ID: 80741

## Application Details

Application Notes: Immunohistochemistry (1:50-1:200)  
The optimal working dilution should be determined by the end user.

Restrictions: For Research Use only

## Handling

Format: Liquid

Buffer: In PBS, pH 7.2 (40 % glycerol, 0.02 % sodium azide)

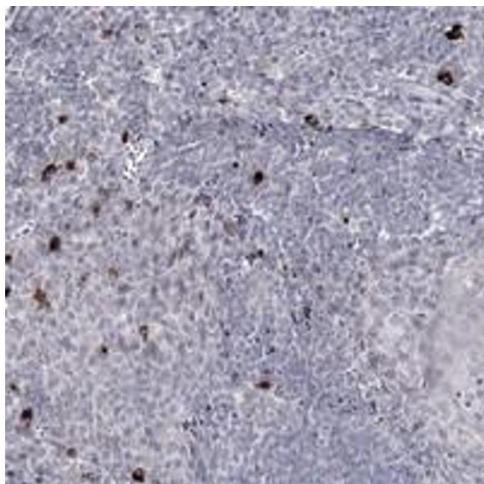
Preservative: Sodium azide

Precaution of Use: This product contains Sodium azide: a POISONOUS AND HAZARDOUS SUBSTANCE which should be handled by trained staff only.

Storage: 4 °C, -20 °C

Storage Comment: Store at 4°C. For long term storage store at -20°C.  
Aliquot to avoid repeated freezing and thawing.

## Images



### Immunohistochemistry

**Image 1.** Immunohistochemical staining of human tonsil with LY6G5C polyclonal antibody shows strong cytoplasmic positivity in a subset of cells.