

Datasheet for ABIN5582865
anti-LYPD3 antibody (C-Term)[Go to Product page](#)

2 Images

Overview

Quantity:	50 µg
Target:	LYPD3
Binding Specificity:	C-Term
Reactivity:	Human, Gorilla
Host:	Rabbit
Clonality:	Polyclonal
Conjugate:	This LYPD3 antibody is un-conjugated
Application:	Immunohistochemistry (Paraffin-embedded Sections) (IHC (p))

Product Details

Purpose:	Rabbit polyclonal antibody raised against synthetic peptide of LYPD3.
Immunogen:	A synthetic peptide corresponding to 16 amino acids at C-terminus region of human LYPD3.
Specificity:	BLAST analysis of the peptide immunogen showed no homology with other human proteins, except ALAS2 (47 %).
Cross-Reactivity:	Gorilla, Human
Cross-Reactivity (Details):	BLAST analysis of the peptide immunogen showed no homology with other human proteins, except ALAS2 (47 %).

Target Details

Target:	LYPD3
---------	-------

Target Details

Alternative Name:	LYPD3 (LYPD3 Products)
Background:	Full Gene Name: LY6/PLAUR domain containing 3 Synonyms: C4.4A
Gene ID:	27076

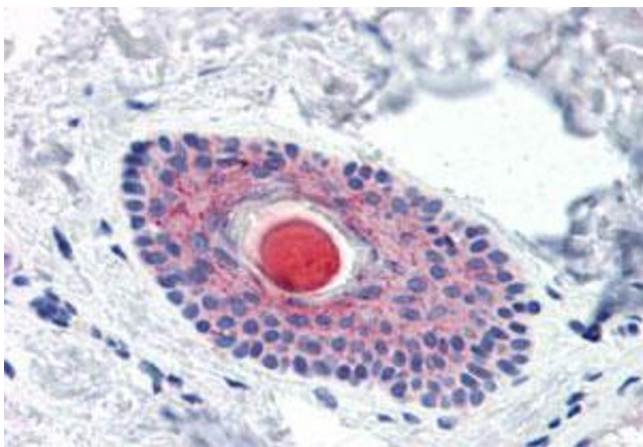
Application Details

Application Notes:	Immunohistochemistry (Formalin/PFA-fixed paraffin-embedded sections) (10 µg/mL)
Restrictions:	For Research Use only

Handling

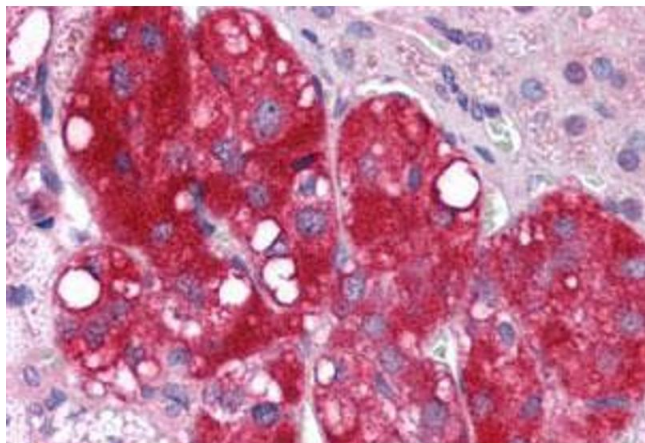
Format:	Liquid
Buffer:	In PBS (0.09 % sodium azide)
Preservative:	Sodium azide
Precaution of Use:	This product contains Sodium azide: a POISONOUS AND HAZARDOUS SUBSTANCE which should be handled by trained staff only.
Storage:	4 °C,-80 °C
Storage Comment:	Store at 4°C. For long term storage store at -80°C. Aliquot to avoid repeated freezing and thawing.

Images



Immunohistochemistry

Image 1. Immunohistochemistry (Formalin/PFA-fixed paraffin-embedded sections) of human hair follicle with LYPD3 polyclonal antibody . Immunohistochemistry of formalin-fixed, paraffin-embedded tissue after heat-induced antigen retrieval.



Immunohistochemistry

Image 2. Immunohistochemistry (Formalin/PFA-fixed paraffin-embedded sections) of human adrenal gland with LYPD3 polyclonal antibody . Immunohistochemistry of formalin-fixed, paraffin-embedded tissue after heat-induced antigen retrieval.