

Datasheet for ABIN5582955

anti-MAN2A2 antibody[Go to Product page](#)**1** Image

Overview

Quantity:	100 µL
Target:	MAN2A2
Reactivity:	Human
Host:	Rabbit
Clonality:	Polyclonal
Conjugate:	This MAN2A2 antibody is un-conjugated
Application:	Immunohistochemistry (Paraffin-embedded Sections) (IHC (p))

Product Details

Purpose:	Rabbit polyclonal antibody raised against recombinant MAN2A2.
Immunogen:	Recombinant protein corresponding to amino acids of human MAN2A2.
Sequence:	HHDAITGTAK EAVVVDYGVR LLRSLVNLKQ VIIHAAHYLV LGDKETYHFD PEAPFLQVDD TRLSHDALPE RTVIQLDSSP RFVVLFPNPLE QERFSMVSLV VNSPRVRVLS EEGQPLAVQI SAHWSSATEA VPDVYQVSVP
Isotype:	IgG
Cross-Reactivity:	Human

Target Details

Target:	MAN2A2
Alternative Name:	MAN2A2 (MAN2A2 Products)

Target Details

Background: Full Gene Name: mannosidase, alpha, class 2A, member 2
Synonyms: MANA2X

Gene ID: 4122

Application Details

Application Notes: Immunohistochemistry (1:20-1:50)
The optimal working dilution should be determined by the end user.

Restrictions: For Research Use only

Handling

Format: Liquid

Buffer: In PBS, pH 7.2 (40 % glycerol, 0.02 % sodium azide)

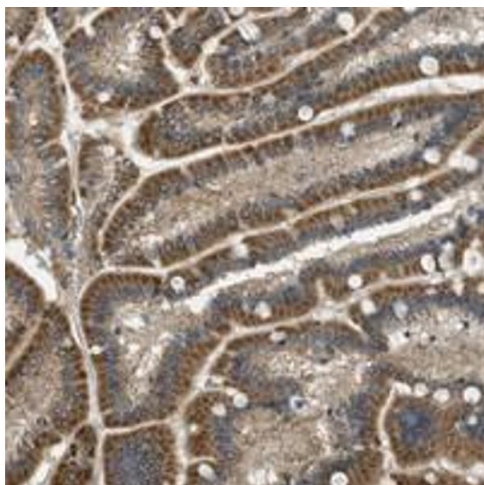
Preservative: Sodium azide

Precaution of Use: This product contains Sodium azide: a POISONOUS AND HAZARDOUS SUBSTANCE which should be handled by trained staff only.

Storage: 4 °C,-20 °C

Storage Comment: Store at 4°C. For long term storage store at -20°C.
Aliquot to avoid repeated freezing and thawing.

Images



Immunohistochemistry

Image 1. Immunohistochemical staining of human duodenum with MAN2A2 polyclonal antibody shows granular cytoplasmic positivity in glandular cells.