

Datasheet for ABIN5582971
anti-LC3C antibody (AA 1-30)[Go to Product page](#)

2 Images

Overview

Quantity:	400 µL
Target:	LC3C (MAP1LC3C)
Binding Specificity:	AA 1-30
Reactivity:	Human
Host:	Rabbit
Clonality:	Polyclonal
Conjugate:	This LC3C antibody is un-conjugated
Application:	Western Blotting (WB), Immunohistochemistry (Paraffin-embedded Sections) (IHC (p))

Product Details

Purpose:	Rabbit polyclonal antibody raised against partial synthetic protein of human MAP1LC3C.
Immunogen:	A synthetic peptide (conjugated with KLH) corresponding to amino acids 1-30 at N-terminus of human MAP1LC3C.
Cross-Reactivity:	Human

Target Details

Target:	LC3C (MAP1LC3C)
Alternative Name:	MAP1LC3C (MAP1LC3C Products)
Background:	Full Gene Name: microtubule-associated protein 1 light chain 3 gamma Synonyms: LC3C

Target Details

Gene ID:	440738
Pathways:	Autophagy

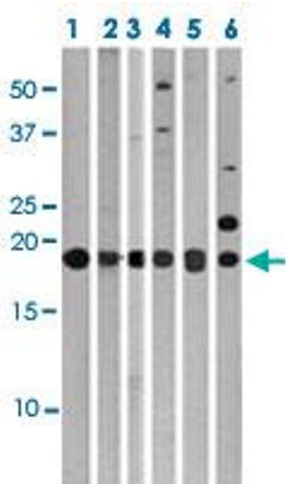
Application Details

Application Notes:	Immunohistochemistry (Formalin/PFA-fixed paraffin-embedded sections) (1:50-100) Western Blot (1:1000) The optimal working dilution should be determined by the end user.
Restrictions:	For Research Use only

Handling

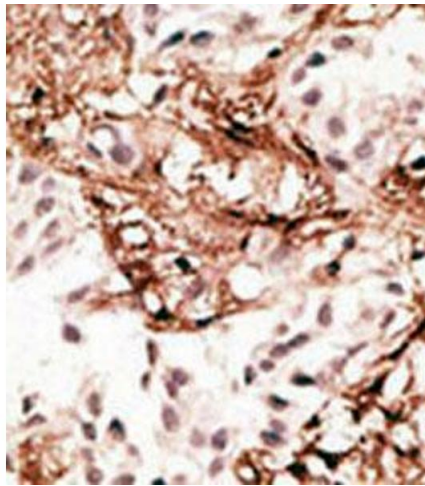
Format:	Liquid
Buffer:	In PBS (0.09 % sodium azide)
Preservative:	Sodium azide
Precaution of Use:	This product contains Sodium azide: a POISONOUS AND HAZARDOUS SUBSTANCE which should be handled by trained staff only.
Storage:	4 °C,-20 °C
Storage Comment:	Store at 4°C. For long term storage store at -20°C. Aliquot to avoid repeated freezing and thawing.

Images



Western Blotting

Image 1. Western blot analysis of Lane 1: 293 cell lysates, Lane 2: Ramos cell lysates, Lane 3: HeLa cell lysates, Lane 4: HepG2 cell lysates, Lane 5: T47D cell lysates, Lane 6: Jurkat cell lysates with MAP1LC3C polyclonal antibody at 1:1000 dilution.



Immunohistochemistry

Image 2. Immunohistochemical staining (Formalin-fixed paraffin-embedded sections) of human breast cancer tissue with MAP1LC3C polyclonal antibody at 1:50-100 dilution.