



Datasheet for ABIN5583011
anti-MAP2K6 antibody (Ser207)



[Go to Product page](#)

2 Images

Overview

Quantity:	100 µg
Target:	MAP2K6
Binding Specificity:	Ser207
Reactivity:	Human, Rat
Host:	Rabbit
Clonality:	Polyclonal
Conjugate:	This MAP2K6 antibody is un-conjugated
Application:	Western Blotting (WB), Immunohistochemistry (Paraffin-embedded Sections) (IHC (p))

Product Details

Purpose:	Rabbit polyclonal antibody raised against synthetic peptide of MAP2K6.
Immunogen:	A synthetic peptide corresponding to residues surrounding S207 of human MAP2K6.
Sequence:	V-D-Sp-V-A
Cross-Reactivity:	Human, Rat

Target Details

Target:	MAP2K6
Alternative Name:	MAP2K6 (MAP2K6 Products)
Background:	Full Gene Name: mitogen-activated protein kinase kinase 6 Synonyms: MAPKK6,MEK6,MKK6,PRKMK6,SAPKK3

Target Details

Gene ID: 5608

Pathways: [MAPK Signaling](#), [TLR Signaling](#), [Activation of Innate immune Response](#), [Regulation of Muscle Cell Differentiation](#), [Toll-Like Receptors Cascades](#)

Application Details

Application Notes: Western Blot (1:500-1:1000)
Immunohistochemistry (1:50-1:100)
The optimal working dilution should be determined by the end user.

Restrictions: For Research Use only

Handling

Format: Liquid

Concentration: 1 mg/mL

Buffer: In PBS (without Mg^{2+} and Ca^{2+}), 150 mM NaCl, pH 7.4 (50 % glycerol, 0.02 % sodium azide)

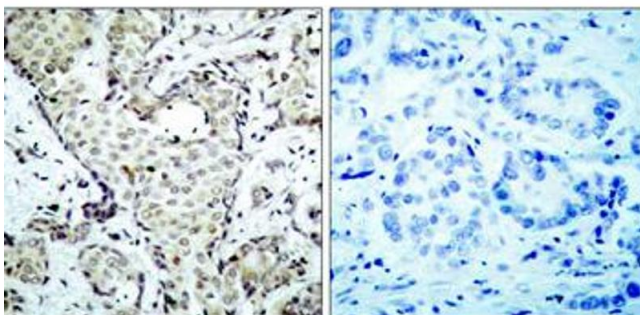
Preservative: Sodium azide

Precaution of Use: This product contains Sodium azide: a POISONOUS AND HAZARDOUS SUBSTANCE which should be handled by trained staff only.

Storage: -20 °C

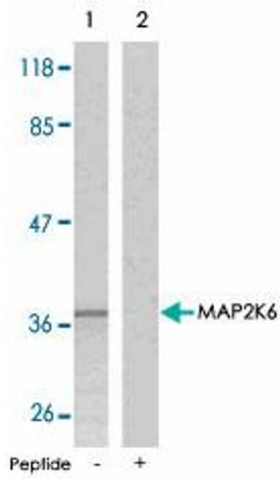
Storage Comment: Store at -20°C.
Aliquot to avoid repeated freezing and thawing.

Images



Immunohistochemistry

Image 1. Immunohistochemical analysis of paraffin-embedded human breast carcinoma tissue using MAP2K6 polyclonal antibody .



Western Blotting

Image 2. Western blot analysis of extracts from MDA-MB-435 cells using MAP2K6 polyclonal antibody .