

Datasheet for ABIN5583046
anti-MAP3K9 antibody (pThr266, pThr312)[Go to Product page](#)

1 Image

Overview

Quantity:	100 µL
Target:	MAP3K9
Binding Specificity:	pThr266, pThr312
Reactivity:	Human, Mouse
Host:	Rabbit
Clonality:	Polyclonal
Conjugate:	This MAP3K9 antibody is un-conjugated
Application:	Immunohistochemistry (Paraffin-embedded Sections) (IHC (p))

Product Details

Purpose:	Rabbit polyclonal antibody raised against synthetic phosphopeptide of human MAP3K9/MAP3K10.
Immunogen:	Synthetic phosphopeptide (conjugated with KLH) corresponding to residues surrounding T312/266 of human MAP3K9/MAP3K10.
Specificity:	This antibody detects endogenous levels of MAP3K9/MAP3K10 only when phosphorylated at threonine 312/266.
Cross-Reactivity:	Human, Mouse

Target Details

Target:	MAP3K9
Alternative Name:	MAP3K9 (MAP3K9 Products)

Target Details

Background: Full Gene Name: mitogen-activated protein kinase kinase kinase 9
Synonyms: MLK1,PRKE1

Gene ID: 4293, 4294

Application Details

Application Notes: Immunohistochemistry (1:50-1:100)
The optimal working dilution should be determined by the end user.

Restrictions: For Research Use only

Handling

Format: Liquid

Buffer: In PBS, pH 7.4 (without Mg^{2+} and Ca^{2+}), (50 % glycerol, 0.02 % sodium azide)

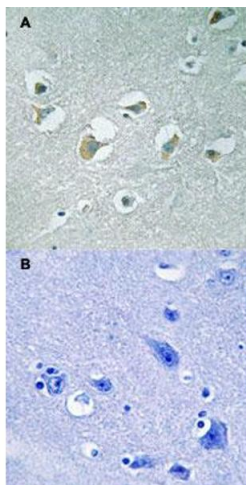
Preservative: Sodium azide

Precaution of Use: This product contains Sodium azide: a POISONOUS AND HAZARDOUS SUBSTANCE which should be handled by trained staff only.

Storage: -20 °C

Storage Comment: Store at -20°C.
Avoid repeated freezing and thawing.

Images



Immunohistochemistry

Image 1. Immunohistochemical staining of human brain tissue by MAP3K9/MAP3K10 (phospho T312/266) polyclonal antibody without blocking peptide (A) or preincubated with blocking peptide (B) under 1:50-1:100 dilution.