



[Go to Product page](#)

Datasheet for ABIN5583082  
**anti-MAPK1IP1L antibody**

2 Images

### Overview

Quantity:	100 µL
Target:	MAPK1IP1L
Reactivity:	Human
Host:	Rabbit
Clonality:	Polyclonal
Conjugate:	This MAPK1IP1L antibody is un-conjugated
Application:	Western Blotting (WB), Immunohistochemistry (Paraffin-embedded Sections) (IHC (p))

### Product Details

Purpose:	Rabbit polyclonal antibody raised against recombinant MAPK1IP1L.
Immunogen:	Recombinant protein corresponding to amino acids of human MAPK1IP1L.
Sequence:	APPVPWGTVP PGAWGPPAPY PAPTGSYPTP GLYPTPSNPF QVPSGPGSAP PMPGG
Isotype:	IgG
Cross-Reactivity:	Human

### Target Details

Target:	MAPK1IP1L
Alternative Name:	MAPK1IP1L ( <a href="#">MAPK1IP1L Products</a> )
Background:	Full Gene Name: mitogen-activated protein kinase 1 interacting protein 1-like Synonyms: C14orf32,MGC23138,MISS,c14_5346

## Target Details

Gene ID: 93487

## Application Details

Application Notes: Immunohistochemistry (1:200-1:500)  
Western Blot (1:250-1:500)  
The optimal working dilution should be determined by the end user.

Restrictions: For Research Use only

## Handling

Format: Liquid

Buffer: In PBS, pH 7.2 (40 % glycerol, 0.02 % sodium azide)

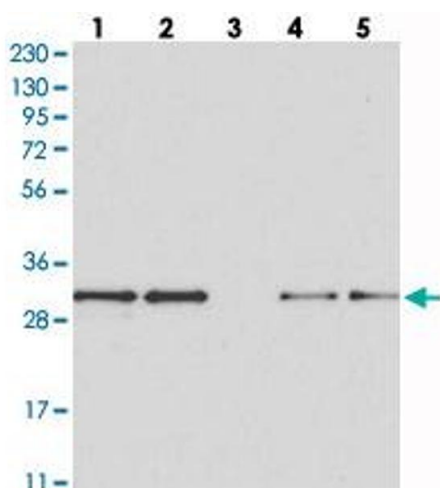
Preservative: Sodium azide

Precaution of Use: This product contains Sodium azide: a POISONOUS AND HAZARDOUS SUBSTANCE which should be handled by trained staff only.

Storage: 4 °C, -20 °C

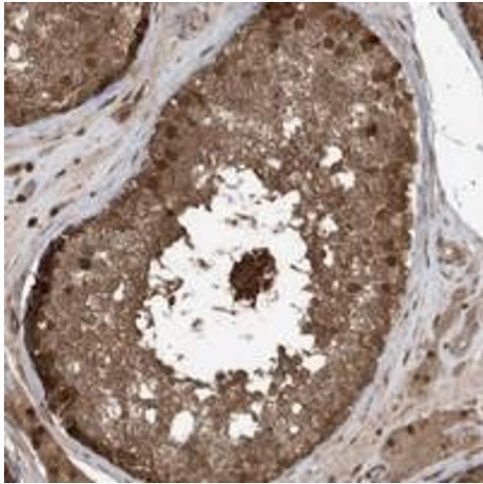
Storage Comment: Store at 4°C. For long term storage store at -20°C.  
Aliquot to avoid repeated freezing and thawing.

## Images



### Western Blotting

**Image 1.** Western blot analysis of Lane 1: RT-4, Lane 2: U-251 MG, Lane 3: Human Plasma, Lane 4: Liver, Lane 5: Tonsil with MAPK11P1L polyclonal antibody at 1:250-1:500 dilution.



### Immunohistochemistry

**Image 2.** Immunohistochemical staining of human testis with MAPK1IP1L polyclonal antibody shows strong cytoplasmic and nuclear positivity in cells in seminiferous ducts at 1:200-1:500 dilution.