

Datasheet for ABIN5583183  
**anti-MARCKS antibody (Ser162.)**[Go to Product page](#)

## 2 Images

## Overview

Quantity:	100 µg
Target:	MARCKS
Binding Specificity:	Ser162.
Reactivity:	Human, Mouse, Rat
Host:	Rabbit
Clonality:	Polyclonal
Conjugate:	This MARCKS antibody is un-conjugated
Application:	Western Blotting (WB), ELISA, Immunohistochemistry (Paraffin-embedded Sections) (IHC (p))

## Product Details

Purpose:	Rabbit polyclonal antibody raised against synthetic peptide of MARCKS.
Immunogen:	A synthetic peptide corresponding to residues surrounding S162 of human MARCKS.
Specificity:	This antibody is specific to MARCKS.
Cross-Reactivity:	Human, Mouse, Rat

## Target Details

Target:	MARCKS
Alternative Name:	MARCKS ( <a href="#">MARCKS Products</a> )
Background:	Full Gene Name: myristoylated alanine-rich protein kinase C substrate Synonyms: 80K-L, FLJ14368, FLJ90045, MACS, PKCSL, PRKCSL

## Target Details

Gene ID: 4082

## Application Details

Application Notes: Western Blot (1:500-1:1000)  
Immunohistochemistry (1:50-1:100)  
ELISA (1:40000)  
The optimal working dilution should be determined by the end user.

Restrictions: For Research Use only

## Handling

Format: Liquid

Concentration: 1 mg/mL

Buffer: In PBS, 150 mM NaCl, pH 7.4 (50 % glycerol, 0.02 % sodium azide)

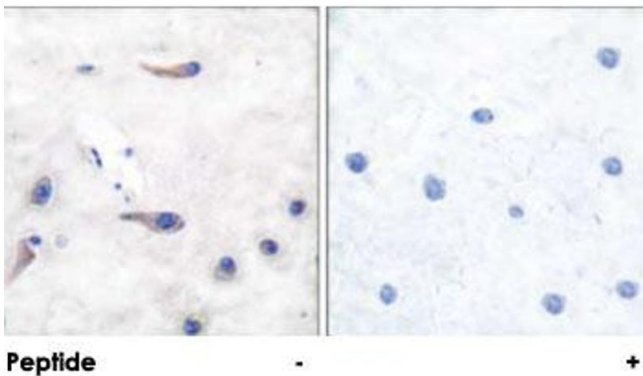
Preservative: Sodium azide

Precaution of Use: This product contains Sodium azide: a POISONOUS AND HAZARDOUS SUBSTANCE which should be handled by trained staff only.

Storage: -20 °C

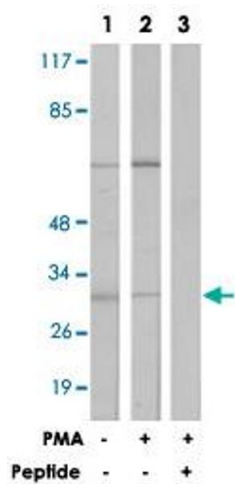
Storage Comment: Store at -20°C.  
Aliquot to avoid repeated freezing and thawing.

## Images



### Immunohistochemistry

**Image 1.** Immunohistochemical analysis of paraffin-embedded human brain tissue using MARCKS polyclonal antibody . Peptide



### Western Blotting

**Image 2.** Western blot analysis of extracts from LoVo cells (Lane 1) and Jurkat cells (Lane 2 and 3) treated with PMA (125 ng/mL, 30 min), using MARCKS polyclonal antibody . Peptide