

Datasheet for ABIN5583188

anti-MARK1 antibody**1** Image[Go to Product page](#)

Overview

Quantity:	50 µg
Target:	MARK1
Reactivity:	Human, Monkey, Rabbit, Horse
Host:	Rabbit
Clonality:	Polyclonal
Conjugate:	This MARK1 antibody is un-conjugated
Application:	Immunohistochemistry (Paraffin-embedded Sections) (IHC (p))

Product Details

Purpose:	Rabbit polyclonal antibody raised against synthetic peptide of MARK1.
Immunogen:	A synthetic peptide (conjugated with KLH) corresponding to human MARK1.
Specificity:	Internal domain of human.
Cross-Reactivity:	Horse, Human, Monkey, Rabbit

Target Details

Target:	MARK1
Alternative Name:	MARK1 (MARK1 Products)
Background:	Full Gene Name: MAP/microtubule affinity-regulating kinase 1 Synonyms: KIAA1477,MARK,MGC126512,MGC126513
Gene ID:	4139

Target Details

Pathways:	SARS-CoV-2 Protein Interactome , The Global Phosphorylation Landscape of SARS-CoV-2 Infection
-----------	---

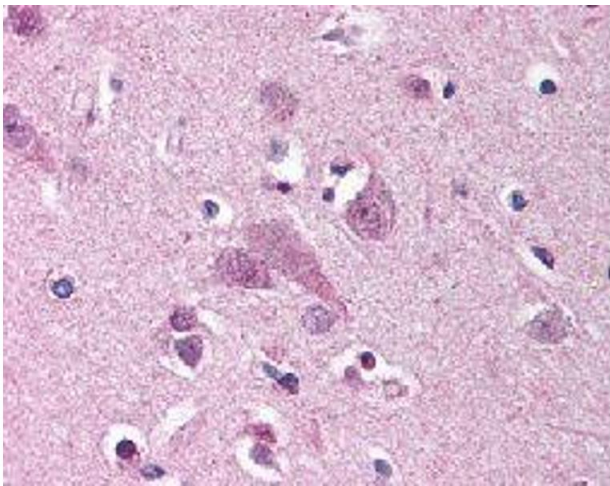
Application Details

Application Notes:	Immunohistochemistry (Formalin/PFA-fixed paraffin-embedded sections) (2.5 µg/mL) The optimal working dilution should be determined by the end user.
Restrictions:	For Research Use only

Handling

Format:	Liquid
Buffer:	In PBS (0.09 % sodium azide)
Preservative:	Sodium azide
Precaution of Use:	This product contains Sodium azide: a POISONOUS AND HAZARDOUS SUBSTANCE which should be handled by trained staff only.
Storage:	4 °C, -20 °C
Storage Comment:	Store at 4°C. For long term storage store at -20°C. Aliquot to avoid repeated freezing and thawing.

Images



Immunohistochemistry

Image 1. Immunohistochemical (Formalin/PFA-fixed paraffin-embedded sections) staining in human brain (cortex) with MARK1 polyclonal antibody .