

Datasheet for ABIN5583189

anti-MARK1 antibody[Go to Product page](#)**1** Image

Overview

Quantity:	50 µg
Target:	MARK1
Reactivity:	Human, Monkey, Rabbit, Cow, Dog
Host:	Rabbit
Clonality:	Polyclonal
Conjugate:	This MARK1 antibody is un-conjugated
Application:	Immunohistochemistry (Paraffin-embedded Sections) (IHC (p))

Product Details

Purpose:	Rabbit polyclonal antibody raised against synthetic peptide of MARK1.
Immunogen:	A synthetic peptide (conjugated with KLH) corresponding to human MARK1.
Specificity:	N-terminal region of human.
Cross-Reactivity:	Cow, Dog, Human, Monkey, Rabbit

Target Details

Target:	MARK1
Alternative Name:	MARK1 (MARK1 Products)
Background:	Full Gene Name: MAP/microtubule affinity-regulating kinase 1 Synonyms: KIAA1477,MARK,MGC126512,MGC126513
Gene ID:	4139

Target Details

Pathways: [SARS-CoV-2 Protein Interactome](#), [The Global Phosphorylation Landscape of SARS-CoV-2 Infection](#)

Application Details

Application Notes: Immunohistochemistry (Formalin/PFA-fixed paraffin-embedded sections) (5 µg/mL)
The optimal working dilution should be determined by the end user.

Restrictions: For Research Use only

Handling

Format: Liquid

Buffer: In PBS (0.09 % sodium azide)

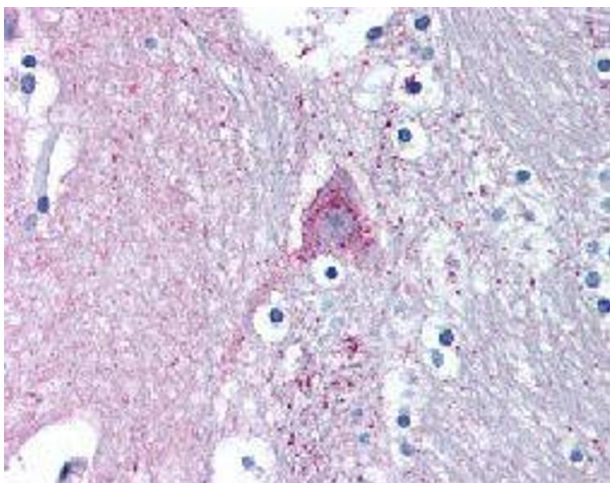
Preservative: Sodium azide

Precaution of Use: This product contains Sodium azide: a POISONOUS AND HAZARDOUS SUBSTANCE which should be handled by trained staff only.

Storage: 4 °C, -20 °C

Storage Comment: Store at 4°C. For long term storage store at -20°C.
Aliquot to avoid repeated freezing and thawing.

Images



Immunohistochemistry

Image 1. Immunohistochemical (Formalin/PFA-fixed paraffin-embedded sections) staining in human brain (caduate) with MARK1 polyclonal antibody .