

Datasheet for ABIN5583197

anti-MARVELD3 antibody (AA 219-268)[Go to Product page](#)**3** Images

Overview

Quantity:	100 µL
Target:	MARVELD3
Binding Specificity:	AA 219-268
Reactivity:	Human
Host:	Rabbit
Clonality:	Polyclonal
Conjugate:	This MARVELD3 antibody is un-conjugated
Application:	Western Blotting (WB), Immunohistochemistry (Paraffin-embedded Sections) (IHC (p))

Product Details

Purpose:	Rabbit polyclonal antibody raised against partial synthetic protein of human MARVELD3.
Immunogen:	A synthetic peptide corresponding to amino acids 219-268 of human MARVELD3.
Sequence:	SYFVLAGFSA SFSSGGGFGN NYYS PFEGTE LEQVRQLDQQ YILRSPLIY
Isotype:	IgG
Cross-Reactivity:	Human

Target Details

Target:	MARVELD3
Alternative Name:	MARVELD3 (MARVELD3 Products)
Background:	Full Gene Name: MARVEL domain containing 3

Target Details

Synonyms: FLJ32280,MARVD3,MRVLDC3

Gene ID: 91862

Pathways: [Cell-Cell Junction Organization](#)

Application Details

Application Notes: Immunohistochemistry (1:250)
Western Blot (1:1000)
The optimal working dilution should be determined by the end user.

Restrictions: For Research Use only

Handling

Format: Liquid

Buffer: In 1X PBS , pH 7.4 (2 % sucrose, 0.09 % sodium azide).

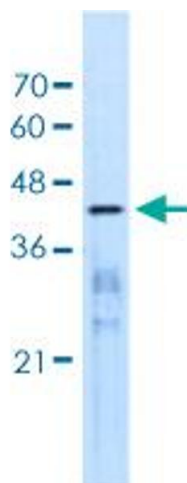
Preservative: Sodium azide

Precaution of Use: This product contains Sodium azide: a POISONOUS AND HAZARDOUS SUBSTANCE which should be handled by trained staff only.

Storage: 4 °C,-20 °C

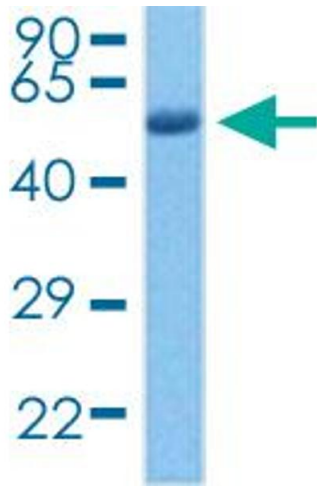
Storage Comment: Store at 4°C for up to one week. For long term storage store at -20°C.
Aliquot to avoid repeated freezing and thawing.

Images



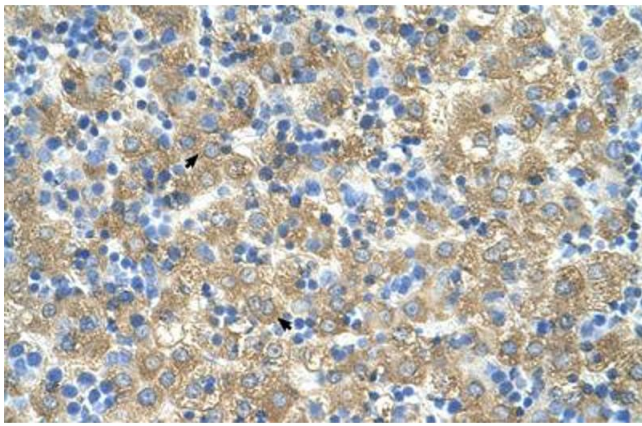
Western Blotting

Image 1. Western blot analysis of Jurkat cell lysate with MARVELD3 polyclonal antibody .



Western Blotting

Image 2. Western blot analysis of human lung tumor tissue lysate with MARVELD3 polyclonal antibody .



Immunohistochemistry

Image 3. Immunohistochemical staining (Formalin-fixed paraffin-embedded sections) of human liver with MARVELD3 polyclonal antibody .