

Datasheet for ABIN5583253
anti-MC4R antibody (Extracellular Domain)[Go to Product page](#)

2 Images

Overview

Quantity:	50 µg
Target:	MC4R
Binding Specificity:	Extracellular Domain
Reactivity:	Human, Monkey, Horse, Chimpanzee, Gorilla, Orang-Utan
Host:	Rabbit
Clonality:	Polyclonal
Conjugate:	This MC4R antibody is un-conjugated
Application:	Immunohistochemistry (Paraffin-embedded Sections) (IHC (p)), Immunocytochemistry (ICC)

Product Details

Purpose:	Rabbit polyclonal antibody raised against synthetic peptide of MC4R.
Immunogen:	A synthetic peptide corresponding to 17 amino acids at N-terminal extracellular domain of human MC4R.
Specificity:	BLAST analysis of the peptide immunogen showed no homology with other human proteins.
Cross-Reactivity:	Chimpanzee, Gorilla, Horse, Human, Monkey, Orang-Utan
Cross-Reactivity (Details):	BLAST analysis of the peptide immunogen showed no homology with other human proteins.

Target Details

Target:	MC4R
Alternative Name:	MC4R (MC4R Products)

Target Details

Background:	Full Gene Name: melanocortin 4 receptor Synonyms: MGC126851,MGC138197
Gene ID:	4160
Pathways:	Hormone Transport , cAMP Metabolic Process , Feeding Behaviour

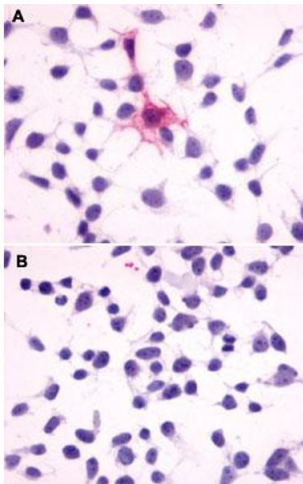
Application Details

Application Notes:	Immunohistochemistry (Formalin/PFA-fixed paraffin-embedded sections) (4-8 µg/mL) The optimal working dilution should be determined by the end user.
Restrictions:	For Research Use only

Handling

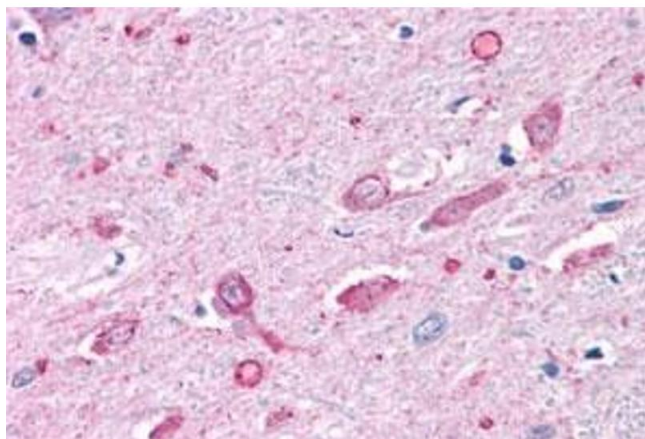
Format:	Liquid
Buffer:	In PBS (0.09 % sodium azide)
Preservative:	Sodium azide
Precaution of Use:	This product contains Sodium azide: a POISONOUS AND HAZARDOUS SUBSTANCE which should be handled by trained staff only.
Storage:	4 °C, -80 °C
Storage Comment:	Store at 4°C. For long term storage store at -80°C. Aliquot to avoid repeated freezing and thawing.

Images



Immunocytochemistry

Image 1. Immunocytochemistry (ICC) staining of HEK293 human embryonic kidney cells transfected (A) or untransfected (B) with MC4R. Using MC4R polyclonal antibody .



Immunohistochemistry

Image 2. Immunohistochemical (Formalin/PFA-fixed paraffin-embedded sections) staining in human brain with MC4R polyclonal antibody . Immunohistochemistry of formalin-fixed, paraffin-embedded tissue after heat-induced antigen retrieval.