



[Go to Product page](#)

Datasheet for ABIN5583419
anti-Melanoma antibody

1 Image

Overview

Quantity:	100 µg
Target:	Melanoma
Reactivity:	Human
Host:	Mouse
Clonality:	Monoclonal
Conjugate:	This Melanoma antibody is un-conjugated
Application:	Immunohistochemistry (Paraffin-embedded Sections) (IHC (p)), Immunofluorescence (IF)

Product Details

Purpose:	Mouse monoclonal antibody raised against human melanoma.
Immunogen:	Human KAL cells derived from lymph node metastasis of malignant melanoma.
Clone:	KBA-62
Isotype:	IgG1
Specificity:	Reacts positively against melanocytic tumors but not other tumors.
Cross-Reactivity:	Human

Target Details

Target:	Melanoma
Abstract:	Melanoma Products

Application Details

Application Notes: Immunofluorescence (0.5-1 µg/mL)
Immunohistochemistry (Formalin/PFA-fixed paraffin-embedded sections) (0.5-1 µg/mL)
The optimal working dilution should be determined by the end user.

Restrictions: For Research Use only

Handling

Format: Liquid

Buffer: In 10 mM PBS (0.05 % BSA and 0.05 % azide).

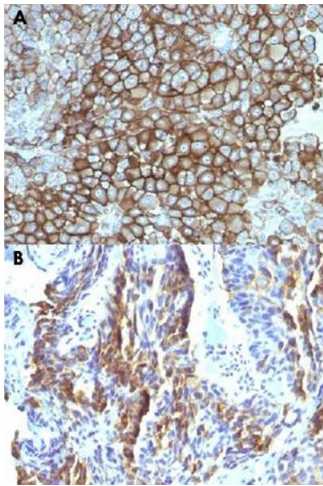
Preservative: Sodium azide

Precaution of Use: This product contains Sodium azide: a POISONOUS AND HAZARDOUS SUBSTANCE which should be handled by trained staff only.

Storage: 4 °C

Storage Comment: Store at 4°C.

Images



Immunohistochemistry

Image 1. Immunohistochemical staining (Formalin-fixed paraffin-embedded sections) of (A) human melanoma and (B) human tongue with Melanoma monoclonal antibody, clone KBA.62 .