

Datasheet for ABIN5583447
anti-METTL1 antibody (AA 1-276)[Go to Product page](#)

1 Image

Overview

Quantity:	50 µg
Target:	METTL1
Binding Specificity:	AA 1-276
Reactivity:	Human
Host:	Mouse
Clonality:	Polyclonal
Conjugate:	This METTL1 antibody is un-conjugated
Application:	Western Blotting (WB)

Product Details

Purpose:	Mouse polyclonal antibody raised against a full-length human METTL1 protein.
Immunogen:	METTL1 (AAH00550, 1 a.a. ~ 276 a.a) full-length human protein.
Sequence:	MAAETRNVAG AEAPPPQKRY YRQRAHSNPM ADHTLRYPVK PEEMDWSELY PEFFAPLTQN QSHDDPKDKK EKRAQAQVEF ADIGCGYGGL LVELSPLFPD TLILGLEIRV KVSDYVQDRI RALRAAPAGG FQNIACLRSN AMKHLPNFFY KGQLTKMFFL FPDPHFKRTK HKWRIISPTL LAEYAYVLRV GGLVYTITDV LELHDWMCTH FEEHPLFERV PLEDLSEDPV VGHLGTSTEE GKKVLRNGGK NFPAIFRRIQ DPVLQAVTSQ TSLPGH
Cross-Reactivity:	Human
Characteristics:	This antibody is validated with a full-length human protein expressed from a mammalian transfected lysate, demonstrating high reactivity, sensitivity and specificity. In addition, this antibody has the ability to recognize both linear and conformational protein epitopes for

Product Details

maximum antibody performance!

Target Details

Target:	METTL1
Alternative Name:	METTL1 (METTL1 Products)
Background:	Full Gene Name: methyltransferase like 1 Synonyms: C12orf1,FLJ95748,TRM8,YDL201w
Gene ID:	4234

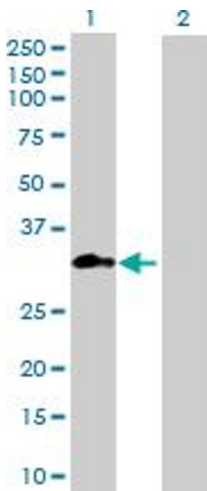
Application Details

Application Notes:	Optimal working dilution should be determined by the investigator.
Restrictions:	For Research Use only

Handling

Buffer:	In 1x PBS, pH 7.4
Storage:	-20 °C
Storage Comment:	Store at -20°C or lower. Aliquot to avoid repeated freezing and thawing.

Images



Western Blotting

Image 1. Western Blot analysis of METTL1 expression in transfected 293T cell line (H00004234-T01) by METTL1 MaxPab polyclonal antibody. Lane 1: METTL1 transfected lysate(30.36 kDa). Lane 2: Non-transfected lysate.