

Datasheet for ABIN5583453

**anti-METTL22 antibody**[Go to Product page](#)**1** Image

## Overview

|              |   |
|--------------|---|
| Quantity:    | 100 µL  |
| Target:      | METTL22   |
| Reactivity:  | Human   |
| Host:        | Rabbit  |
| Clonality:   | Polyclonal  |
| Conjugate:   | This METTL22 antibody is un-conjugated                      |
| Application: | Immunohistochemistry (Paraffin-embedded Sections) (IHC (p)) |

## Product Details

|                   |  |
|-------------------|--|
| Purpose:          | Rabbit polyclonal antibody raised against recombinant METTL22.                         |
| Immunogen:        | Recombinant protein corresponding to amino acids of human METTL22.                     |
| Sequence:         | RNIALNSHLA ATGGGIVRVK ELDWLKDDLC TDPKVPFSWS QEEISDLYDH TTILFAAEVF<br>YDDDLTDAVF KTLRSR |
| Isotype:          | IgG  |
| Cross-Reactivity: | Human  |

## Target Details

|                   |  |
|-------------------|--|
| Target:           | METTL22                                      |
| Alternative Name: | METTL22 ( <a href="#">METTL22 Products</a> ) |
| Background:       | Full Gene Name: methyltransferase like 22    |

Target Details

|          |                           |
|----------|---------------------------|
|          | Synonyms: LP8272,C16orf68 |
| Gene ID: | 79091                     |

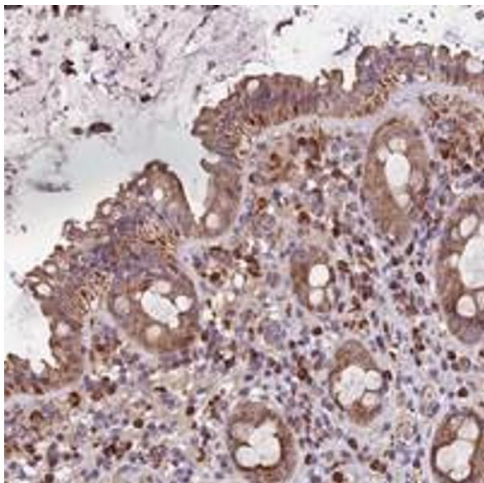
Application Details

|                    |   |
|--------------------|---|
| Application Notes: | Immunohistochemistry (1:50-1:200)<br>The optimal working dilution should be determined by the end user. |
| Restrictions:      | For Research Use only   |

Handling

|                    |  |
|--------------------|--|
| Format:            | Liquid   |
| Buffer:            | In PBS, pH 7.2 (40 % glycerol, 0.02 % sodium azide)  |
| Preservative:      | Sodium azide   |
| Precaution of Use: | This product contains Sodium azide: a POISONOUS AND HAZARDOUS SUBSTANCE which should be handled by trained staff only. |
| Storage:           | 4 °C,-20 °C  |
| Storage Comment:   | Store at 4°C. For long term storage store at -20°C.<br>Aliquot to avoid repeated freezing and thawing.                 |

Images



Immunohistochemistry

**Image 1.** Immunohistochemical staining of human rectum with METTL22 polyclonal antibody shows moderate cytoplasmic positivity in glandular cells.