

Datasheet for ABIN5583460

anti-METTL8 antibody[Go to Product page](#)**1** Image

Overview

Quantity:	100 µL
Target:	METTL8
Reactivity:	Human
Host:	Rabbit
Clonality:	Polyclonal
Conjugate:	This METTL8 antibody is un-conjugated
Application:	Immunohistochemistry (Paraffin-embedded Sections) (IHC (p))

Product Details

Purpose:	Rabbit polyclonal antibody raised against recombinant METTL8.
Immunogen:	Recombinant protein corresponding to amino acids of human METTL8.
Sequence:	MNMIWRNSIS CLRLGKVPHR YQSGYHPVAP LGSRLTDPA KVFEHNMWDH MQWSKEEEAA ARKKVKENSA VRVLEE
Isotype:	IgG
Cross-Reactivity:	Human

Target Details

Target:	METTL8
Alternative Name:	METTL8 (METTL8 Products)
Background:	Full Gene Name: methyltransferase like 8

Target Details

Synonyms: FLJ13334,FLJ13984,FLJ31054,FLJ42098,FLJ77788,TIP

Gene ID: 79828

Application Details

Application Notes: Immunohistochemistry (1:200-1:500)
The optimal working dilution should be determined by the end user.

Restrictions: For Research Use only

Handling

Format: Liquid

Buffer: In PBS, pH 7.2, (40 % glycerol, 0.02 % sodium azide)

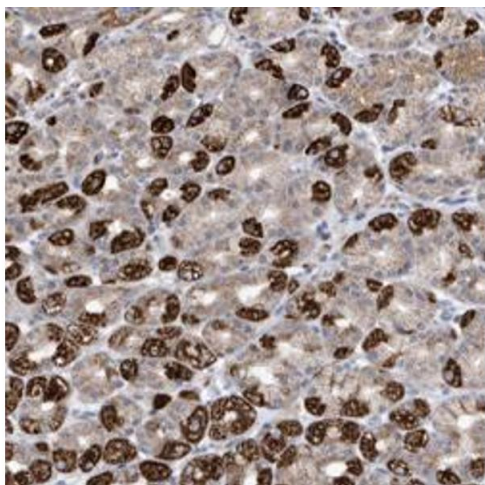
Preservative: Sodium azide

Precaution of Use: This product contains Sodium azide: a POISONOUS AND HAZARDOUS SUBSTANCE which should be handled by trained staff only.

Storage: 4 °C,-20 °C

Storage Comment: Store at 4°C. For long term storage store at -20°C.
Aliquot to avoid repeated freezing and thawing.

Images



Immunohistochemistry

Image 1. Immunohistochemical staining of human stomach with METTL8 polyclonal antibody shows strong cytoplasmic positivity in parietal cells.