

Datasheet for ABIN5583509  
**anti-MICALL2 antibody**[Go to Product page](#)

## 1 Image

## Overview

Quantity:	100 µL
Target:	MICALL2
Reactivity:	Human
Host:	Rabbit
Clonality:	Polyclonal
Conjugate:	This MICALL2 antibody is un-conjugated
Application:	Immunohistochemistry (Paraffin-embedded Sections) (IHC (p))

## Product Details

Purpose:	Rabbit polyclonal antibody raised against recombinant MICALL2.
Immunogen:	Recombinant protein corresponding to amino acids of human MICALL2.
Sequence:	DVCDNWLRLPE PPGQEARVQS WKEEEKKPHL QGKPGRLSP ANVPALPGET VTSPVRLHPD YLSPEEIQRQ LQDIERRLDA LELRGVELEK RL
Isotype:	IgG
Cross-Reactivity:	Human

## Target Details

Target:	MICALL2
Alternative Name:	MICALL2 ( <a href="#">MICALL2 Products</a> )
Background:	Full Gene Name: MICAL-like 2

## Target Details

Synonyms: FLJ23471,FLJ41996,FLJ44858,FLJ45410,JRAB,MGC46023,MICAL-L2

Gene ID: 79778

## Application Details

Application Notes: Immunohistochemistry (1:200-1:500)  
The optimal working dilution should be determined by the end user.

Restrictions: For Research Use only

## Handling

Format: Liquid

Buffer: In PBS, pH 7.2 (40 % glycerol, 0.02 % sodium azide)

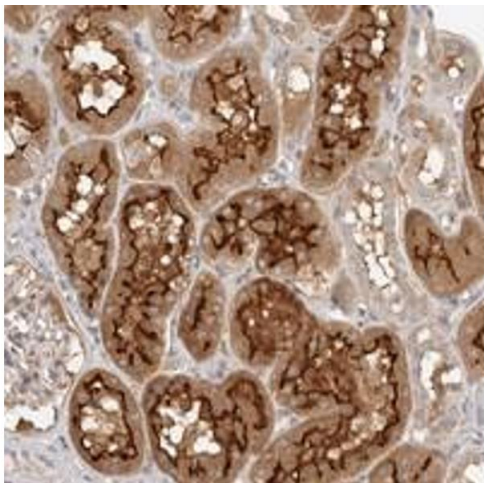
Preservative: Sodium azide

Precaution of Use: This product contains Sodium azide: a POISONOUS AND HAZARDOUS SUBSTANCE which should be handled by trained staff only.

Storage: 4 °C,-20 °C

Storage Comment: Store at 4°C. For long term storage store at -20°C.  
Aliquot to avoid repeated freezing and thawing.

## Images



### Immunohistochemistry

**Image 1.** Immunohistochemical staining of human kidney with MICALL2 polyclonal antibody shows strong cytoplasmic and membrane positivity in cells in tubules.