

Datasheet for ABIN5583518

anti-MAP4K6 antibody[Go to Product page](#)**1** Image

Overview

Quantity:	50 µg
Target:	MAP4K6 (MINK1)
Reactivity:	Human, Mouse, Rat, Pig, Horse, Monkey, Hamster, Gorilla
Host:	Rabbit
Clonality:	Polyclonal
Conjugate:	This MAP4K6 antibody is un-conjugated
Application:	Immunohistochemistry (Paraffin-embedded Sections) (IHC (p))

Product Details

Purpose:	Rabbit polyclonal antibody raised against synthetic peptide of MINK1.
Immunogen:	A synthetic peptide (conjugated with KLH) corresponding to human MINK1.
Specificity:	Internal domain of human.
Cross-Reactivity:	Gorilla, Hamster, Horse, Human, Monkey, Mouse, Pig, Rat

Target Details

Target:	MAP4K6 (MINK1)
Alternative Name:	MINK1 (MINK1 Products)
Background:	Full Gene Name: misshapen-like kinase 1 (zebrafish) Synonyms: B55,MAP4K6,MGC21111,MINK,YSK2,ZC3,hMINK,hMINKbeta
Gene ID:	50488

Target Details

Pathways: [Synaptic Membrane](#)

Application Details

Application Notes: Immunohistochemistry (Formalin/PFA-fixed paraffin-embedded sections) (5 µg/mL)
The optimal working dilution should be determined by the end user.

Restrictions: For Research Use only

Handling

Format: Liquid

Buffer: In PBS (0.09 % sodium azide)

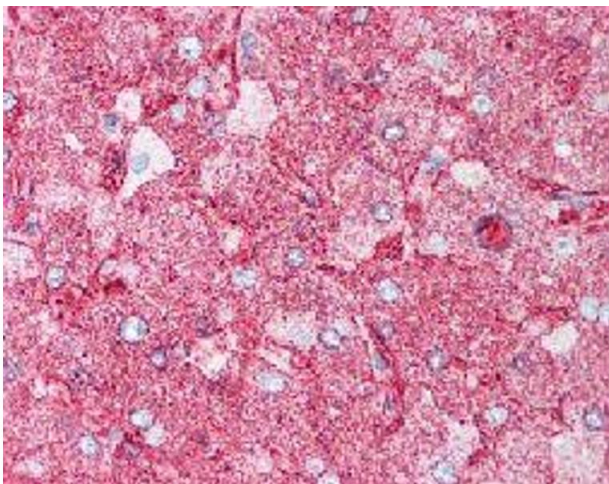
Preservative: Sodium azide

Precaution of Use: This product contains Sodium azide: a POISONOUS AND HAZARDOUS SUBSTANCE which should be handled by trained staff only.

Storage: 4 °C, -80 °C

Storage Comment: Store at 4°C. For long term storage store at -80°C.
Aliquot to avoid repeated freezing and thawing.

Images



Immunohistochemistry

Image 1. Immunohistochemical (Formalin/PFA-fixed paraffin-embedded sections) staining in human liver with MINK1 polyclonal antibody .